

A Presentation to:

Pasadena Unified School District

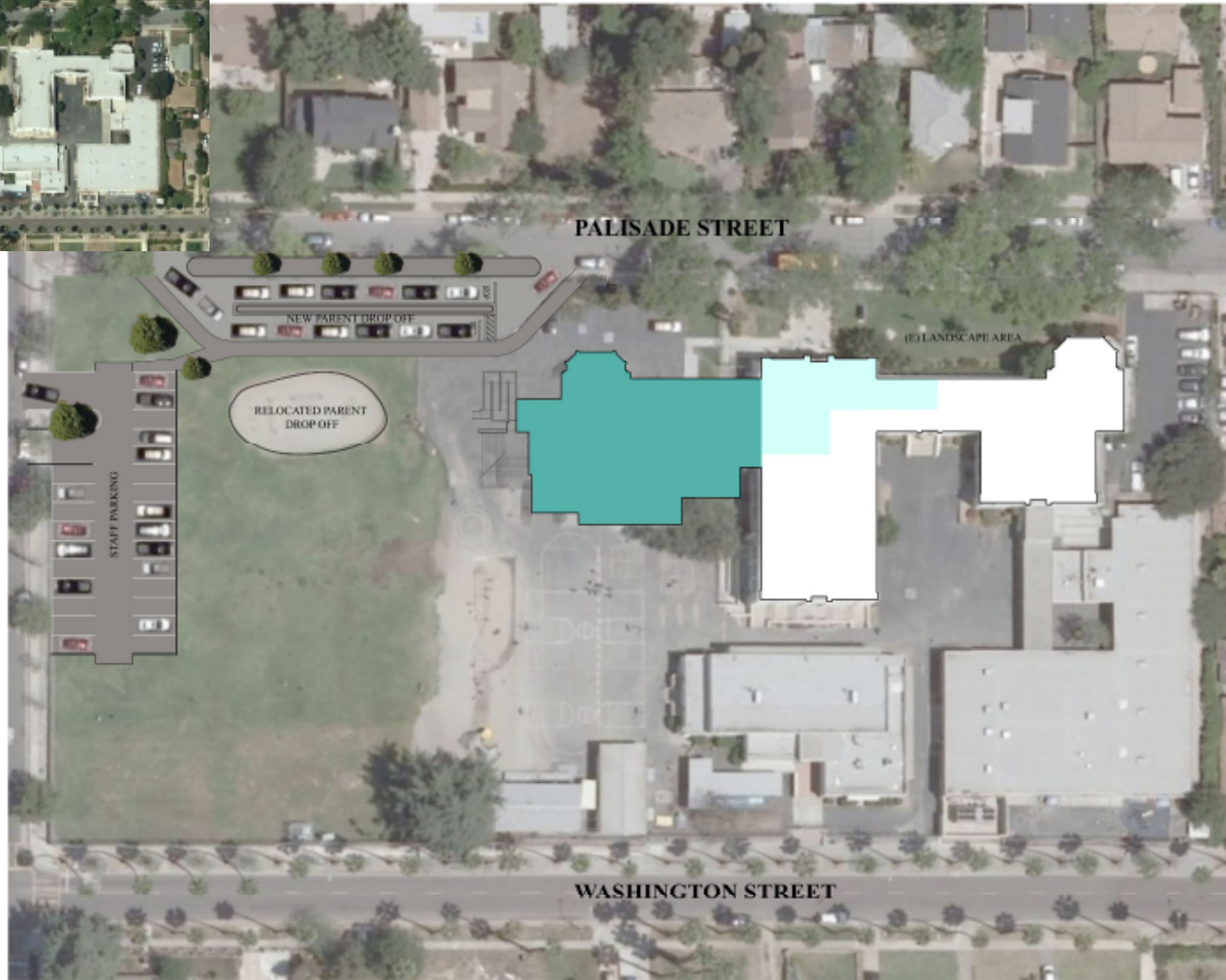


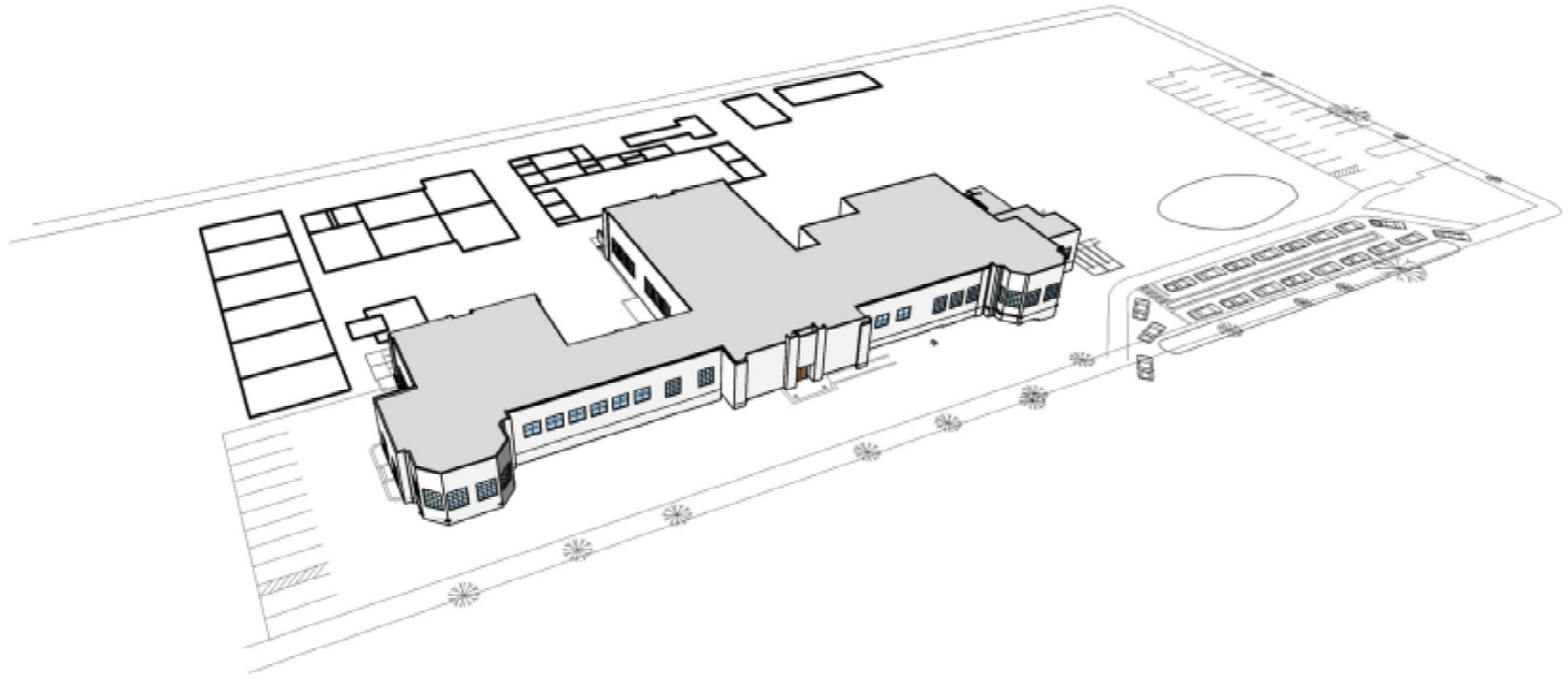
CLEVELAND ELEMENTARY SCHOOL SPACE SUMMARY (Revised 9-8-09)

New Building Wing / Room Name	Qty	Area / sf	Subtotal / sf	Cost / sf	Extended Cost
Resource Teacher Offices	4	154	616	\$325	\$200,200
Family Center	1	565	565	\$325	\$183,625
Staff Lounge / Workroom	1	350	350	\$325	\$113,750
Mens Restroom	1	80	80	\$325	\$26,000
Womens Restroom	1	175	175	\$400	\$70,000
Student Bathrooms (serving playfield)	2	215	430	\$400	\$172,000
Custodial Room	1	90	90	\$200	\$18,000
Computer Lab	1	1,300	1,300	\$325	\$422,500
Special Education Classroom	1	960	960	\$325	\$312,000
Standard Classroom	2	960	1,920	\$325	\$624,000
Circulation	1	2,260	2,260	\$225	\$508,500
Subtotal			8,746		\$2,650,575
Tenant improvements (e) bldg					
Main Office / Lobby	1	500	500	\$200	\$100,000
Nurse's Office	1	275	275	\$200	\$55,000
Principal's Office	1	325	325	\$200	\$65,000
Large Conference Room	1	365	365	\$200	\$73,000
Teacher's Workroom	1	435	435	\$200	\$87,000
Subtotal			1,900		\$293,000
Site Development					
Parent Drop Off Paving	1	5,120	5,120	\$5	\$25,600
Parent Drop Off Curb	1	300	300	\$30	\$9,000
Parent Drop Off Fencing	1	135	135	\$10	\$1,350
Student Sidewalk Waiting Area	1	3,135	3,135	\$12	\$37,620
Relocate Play Structure	1	Lump Sum	1	\$20,000	\$20,000
Staff Parking Lot Paving	1	9,800	9,800	\$5	\$49,000
Staff Parking Lot Curb	1	250	250	\$30	\$7,500
Subtotal					\$150,070
Construction Cost Total					\$3,093,645
Estimated Soft Costs				25%	\$773,411
Project Cost Total					\$3,867,056

EXISTING MAIN BUILDING SPACE SUMMARY

Existing Building / Room Name	Qty	Area / sf	Subtotal / sf
Library	1	1,820	1,820
Library workroom	1	270	270
Classroom	7	960	6,720
Janitor	1	90	90
Womens Restroom	1	200	200
Girls Restroom	1	300	300
Staff Restroom	2	80	160
Principal	1	315	315
Office Manager	1	195	195
Administration / Storage	1	600	600
Boys Restroom	1	360	360
Teacher Lounge	1	230	230
Subtotal			11,260
BUILDING B			
Classroom	6	960	5,760
Subtotal			5,760
BUILDING B2			
Classroom	5	960	4,800
Boys Restroom	1	275	275
Girls Restroom	1	275	275
Utilities	1	200	200
Subtotal			5,550
BUILDING B3			
Classroom	5	960	4,800
Boys Restroom	1	250	250
Girls Restroom	1	250	250
Subtotal			5,300
BUILDING C			
Boys Dressing	1	275	275
Girls Dressing	1	275	275
Water Heater Room	1	65	65
Dishwashing	1	150	150
Entry	1	120	120
Pantry	1	88	88
Kitchen	1	400	400
Food Service	1	320	320
Ticket	1	80	80
Custodian	1	50	50
Locker	1	75	75
Toilet	1	50	50
Foyer	1	175	175
Toilet	1	80	80
Storage	1	220	220
Multipurpose Room	1	4,000	4,000
Subtotal			6,423
Grand Total Existing Building Area			34,293







NORTH ELEVATION (PALISADE STREET)



WEST ELEVATION



SOUTH ELEVATION

1/16" = 1'-0"



LEGEND

ADMINISTRATION

- TENANT IMPROVEMENTS
1345 SF
- PRINCIPAL'S OFFICE
325 SF
- NURSES OFFICE
275 SF
- FAMILY CENTER
565 SF
- RESOURCE/TEACHER OFFICE
154 SF
- STAFF LOUNGE
350 SF
- LOBBY / MAIN OFFICE
500 SF

ACADEMICS

- CLASSROOM
960 SF
- EXISTING CLASSROOM
- COMPUTER LAB
1300 SF
- EXISTING KINDERGARTEN
- SPECIAL EDUCATION
- EXISTING PHYSICAL EDUCATION

SHARED SUPPORT

- EXISTING LIBRARY
- EXISTING MULTI-PURPOSE
- EXISTING FOOD SERVICE
- NEW RESTROOM
- EXISTING RESTROOM
- EXISTING LUNCH SHELTER



Existing Building

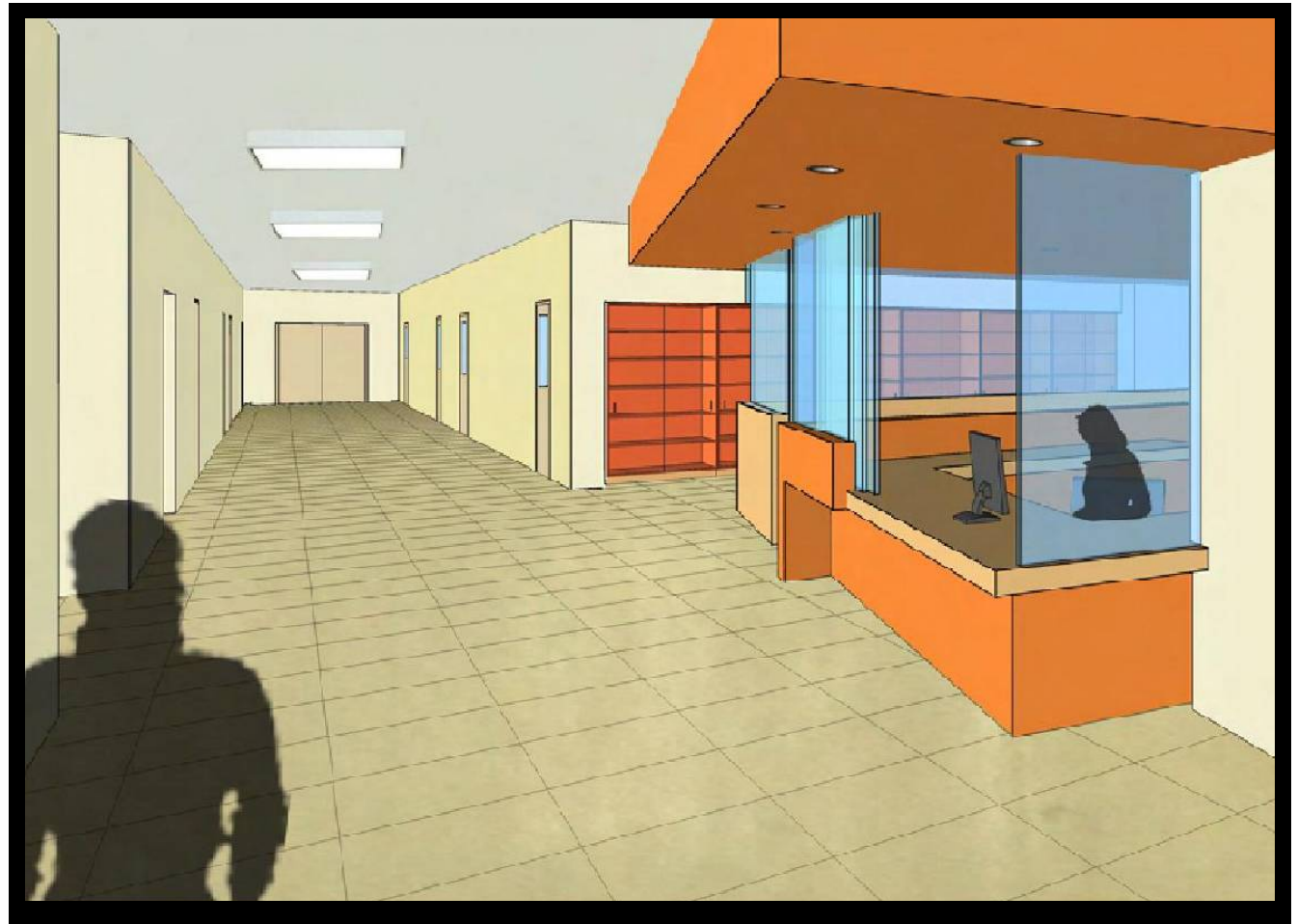


- LEGEND**
- ADMINISTRATION**
- CENTRAL ADMIN.
 - PRINCIPAL OFFICE
 - NURSE'S OFFICE
 - FAMILY CENTER
 - TEACHER RESOURCE OFFICE
 - STAFF LOUNGE
 - LOBBY
- ACADEMICS**
- CLASSROOM
 - EXISTING CLASSROOM
 - COMPUTER LAB
 - SPECIAL EDUCATION
- SHARED SUPPORT**
- EXISTING LIBRARY
 - NEW RESTROOM
 - EXISTING RESTROOM

Existing Building and New Addition



1/16" = 1'-0"



**View towards Reception Desk
from Entry Doors**



View of Guests Checking In



View of Entry Doors from the Reception Desk



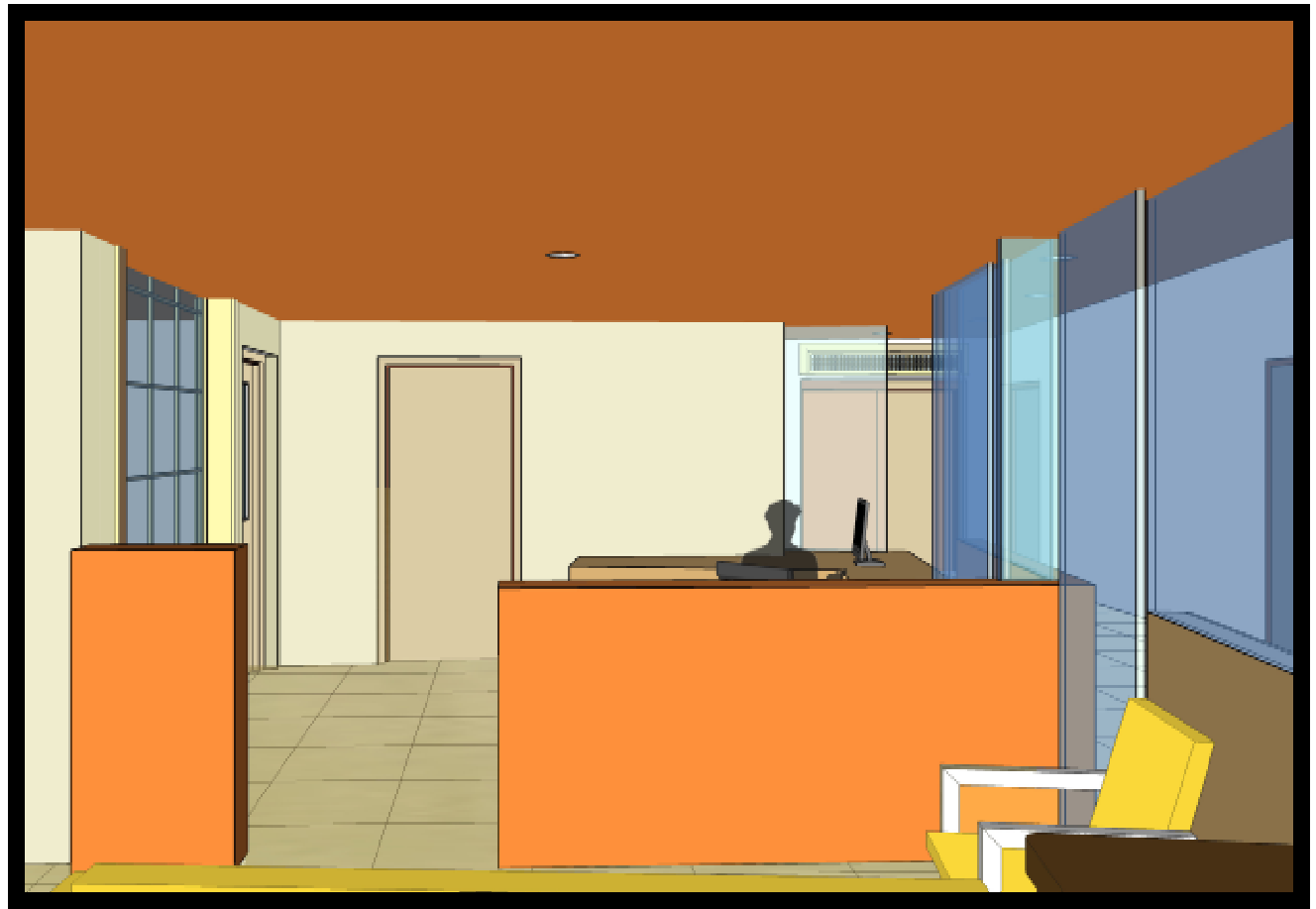
View from Administration Entry to Entry Doors



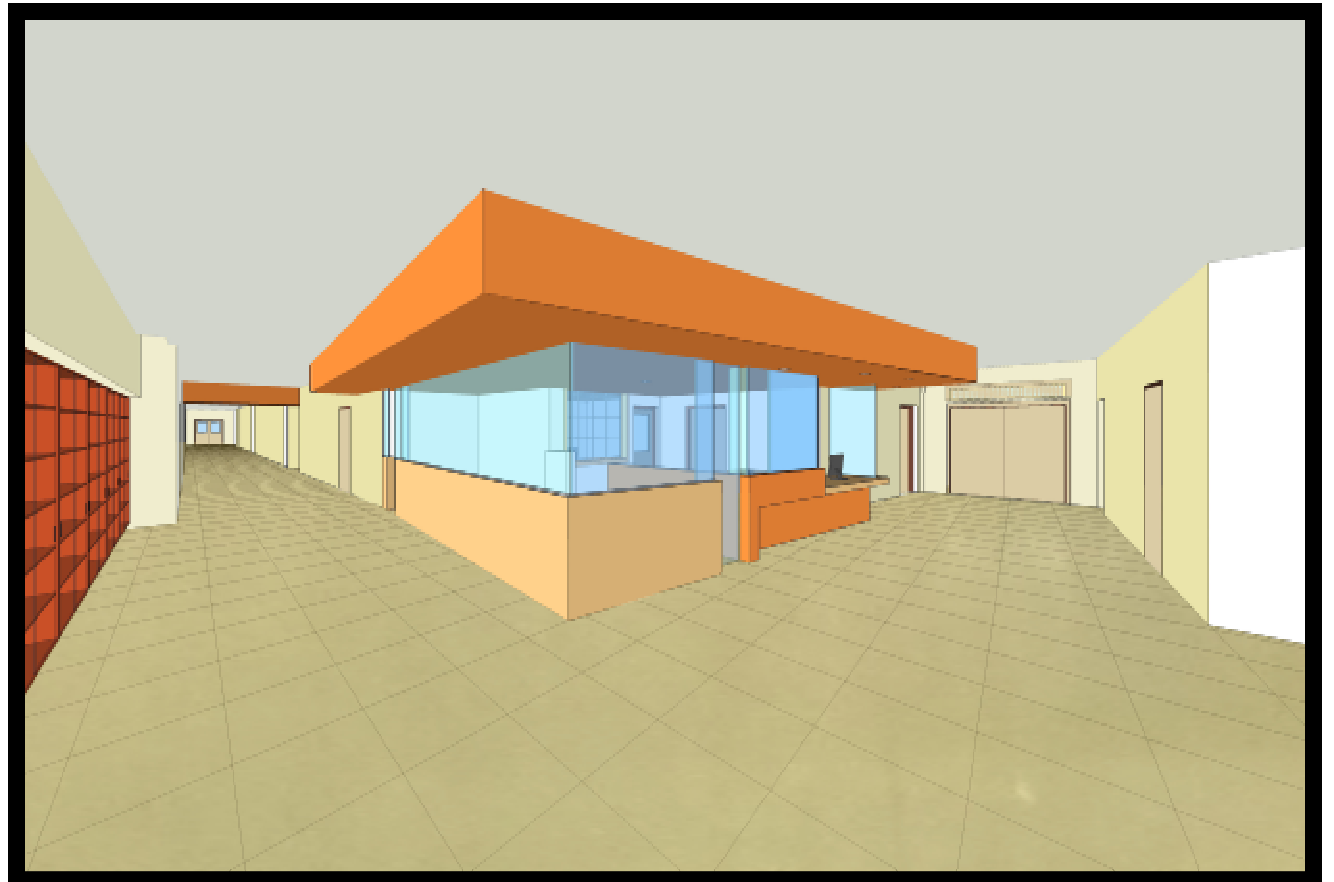
View from the Office Manager's Desk



View from Principal's Office



View from Waiting Area



View of New Administration Area



New Computer Lab



New Staff Lounge



Typical Classroom

PRELIMINARY PROJECT SCHEDULE

Task Description	Start	End
Programming/Schematic Design	June 1, 2009	August 31, 2009
Design Development	September 1, 2009	September 30, 2009
Construction Document	October 1, 2009	December 31, 2009
Governmental Agency Review	January 1, 2010	June 31, 2010
Bidding and Negotiations	July 1, 2010	August 31, 2010
Construction	September 1, 2010	September 1, 2011