

McKinley School



District Facilities Meeting
16 December 2009

discussion items AGENDA

MCKINLEY
SCHOOL

- Review of Existing Site Plan
- Review of Approved Phase 1 Site Plan
- Recommended Phase 1 Site Plan
- Next Steps



campus master plan

EXISTING SITE PLAN

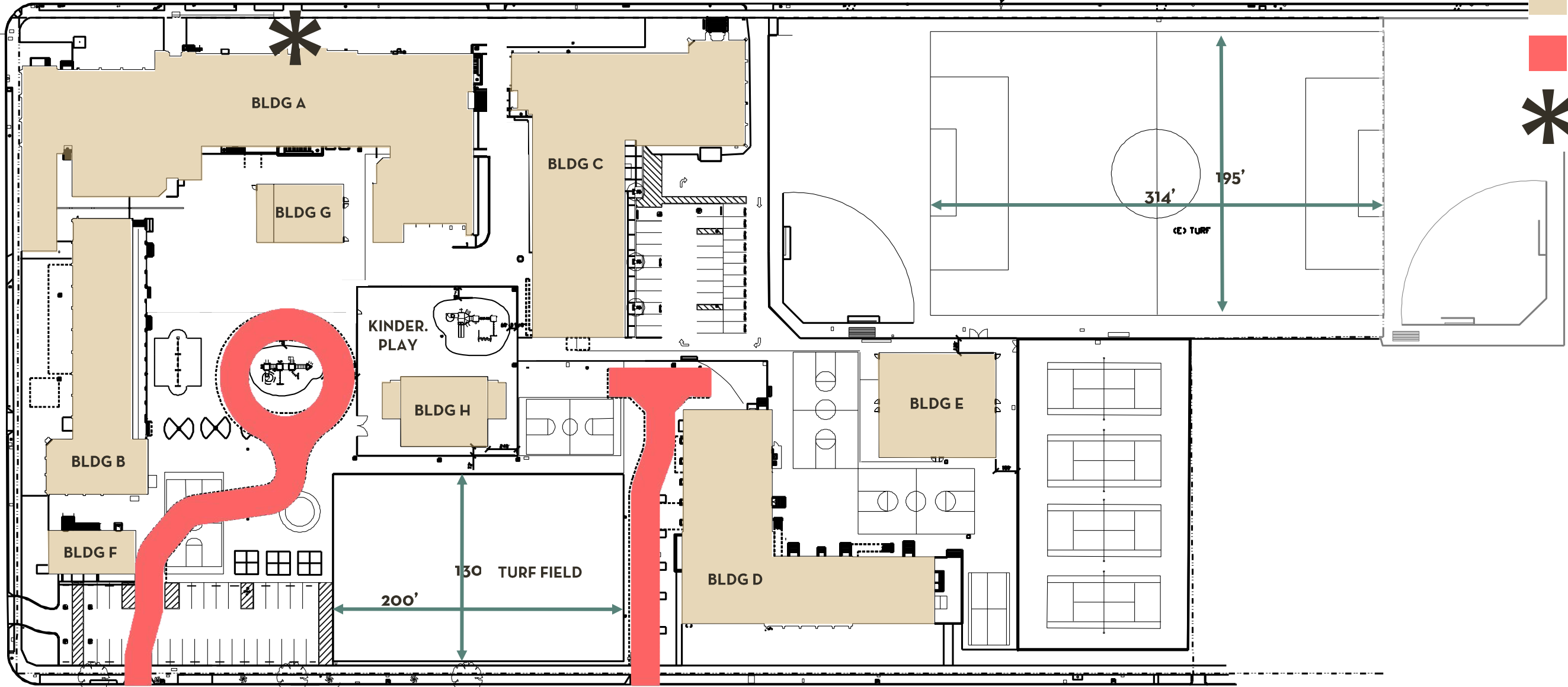
MCKINLEY
SCHOOL

DEL MAR BLVD

OAK KNOLL AVE

(FIRE DEPT. ACCESS FROM STREET)

(E) FIRE HYDRANT



- EXISTING BUILDINGS
- FIRE ACCESS
- MAIN ENTRANCE

EXISTING SITE

KINDER. PLAY	5,800 sf
GR. 1-5 PLAY	20,000 sf
TURF FIELD	26,000 sf
MS COURTS	6 halves
PARKING	63 spaces

EL MOLINO AVE

(E) FIRE HYDRANT

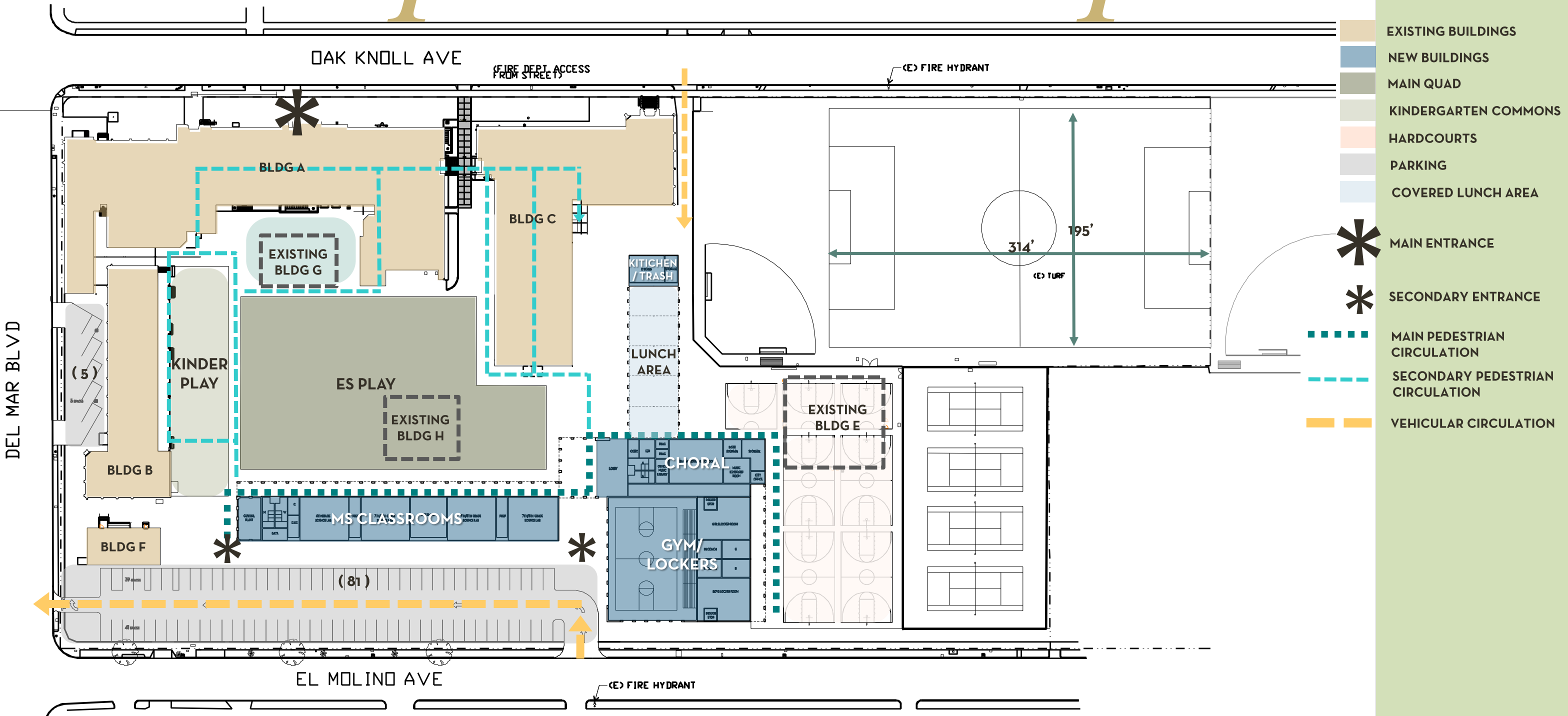
EXISTING



campus master plan

APPROVED MASTER PLAN

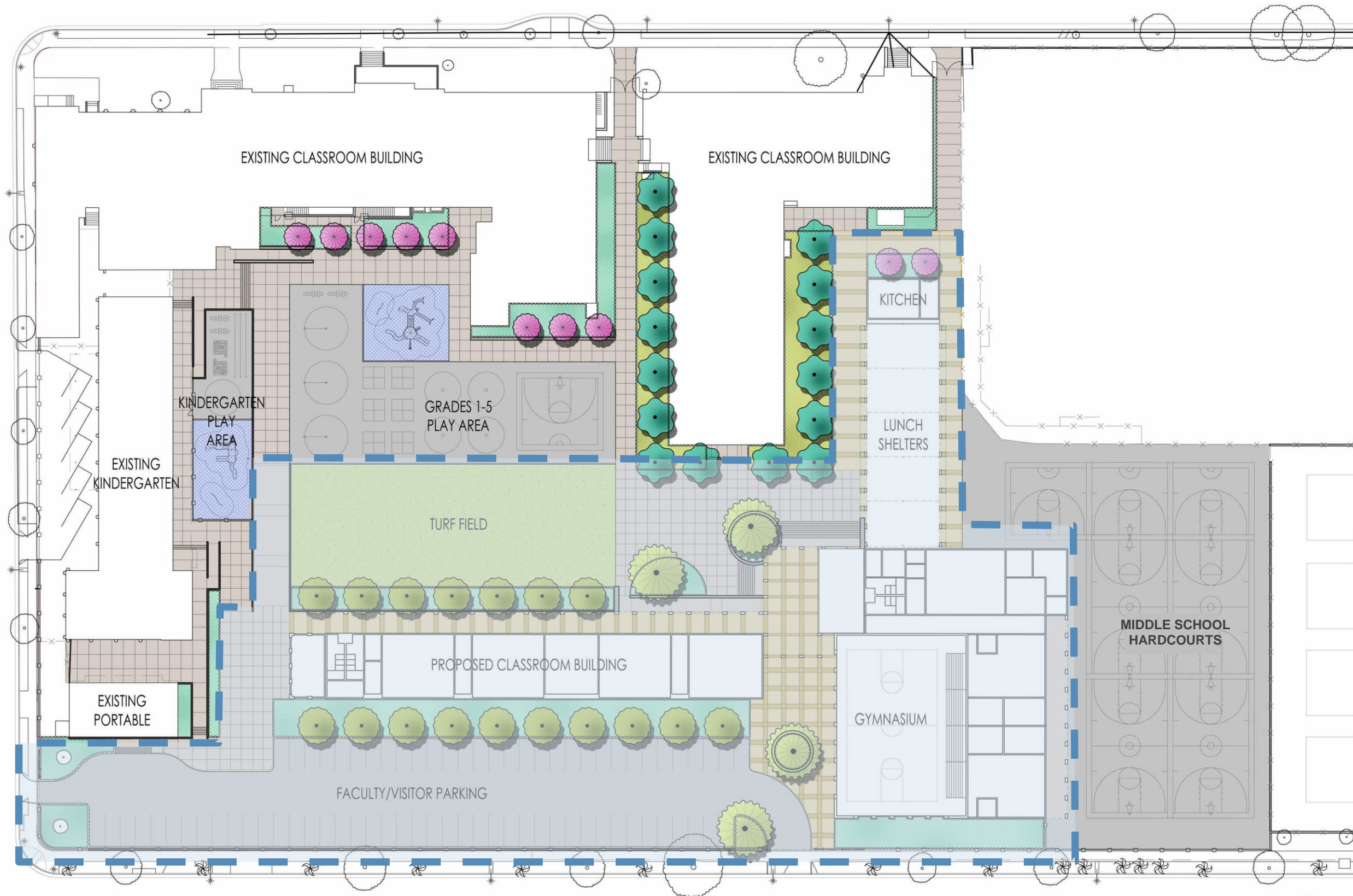
MCKINLEY
SCHOOL



- EXISTING BUILDINGS
- NEW BUILDINGS
- MAIN QUAD
- KINDERGARTEN COMMONS
- HARDCOURTS
- PARKING
- COVERED LUNCH AREA
- ✱ MAIN ENTRANCE
- ✱ SECONDARY ENTRANCE
- MAIN PEDESTRIAN CIRCULATION
- SECONDARY PEDESTRIAN CIRCULATION
- VEHICULAR CIRCULATION

schematic design APPROVED SITE PLAN

MCKINLEY
SCHOOL



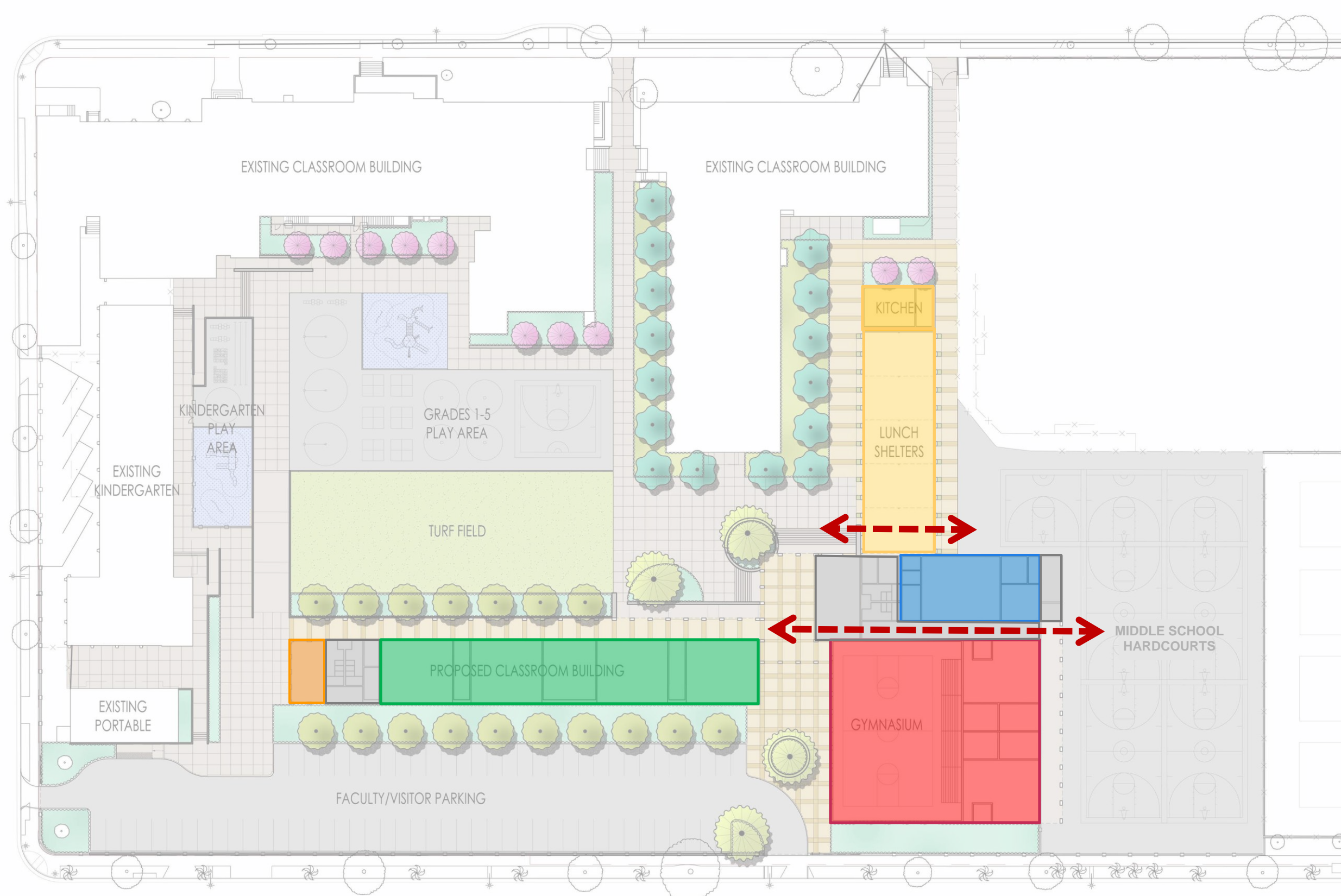
PHASE ONE SCOPE

PHASE ONE



schematic design APPROVED SITE PLAN

MCKINLEY
SCHOOL



- FOOD SERVICE
- BAND ROOM
- ATHLETICS
- PROPOSED CLASSROOMS
- CENTRAL PLANT
- SUPPORT SPACES

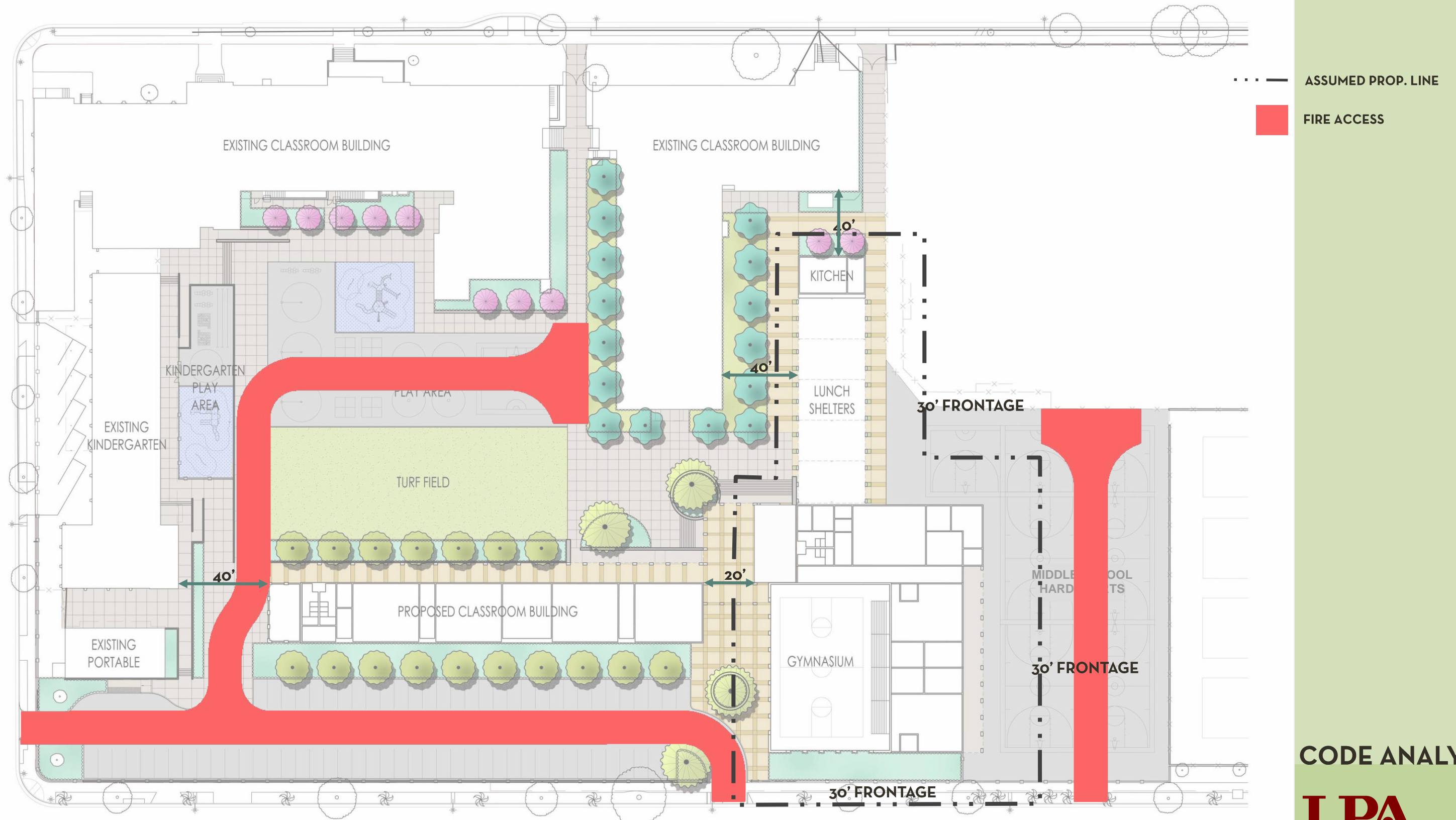
PROGRAM



schematic design

APPROVED SITE PLAN

MCKINLEY
SCHOOL

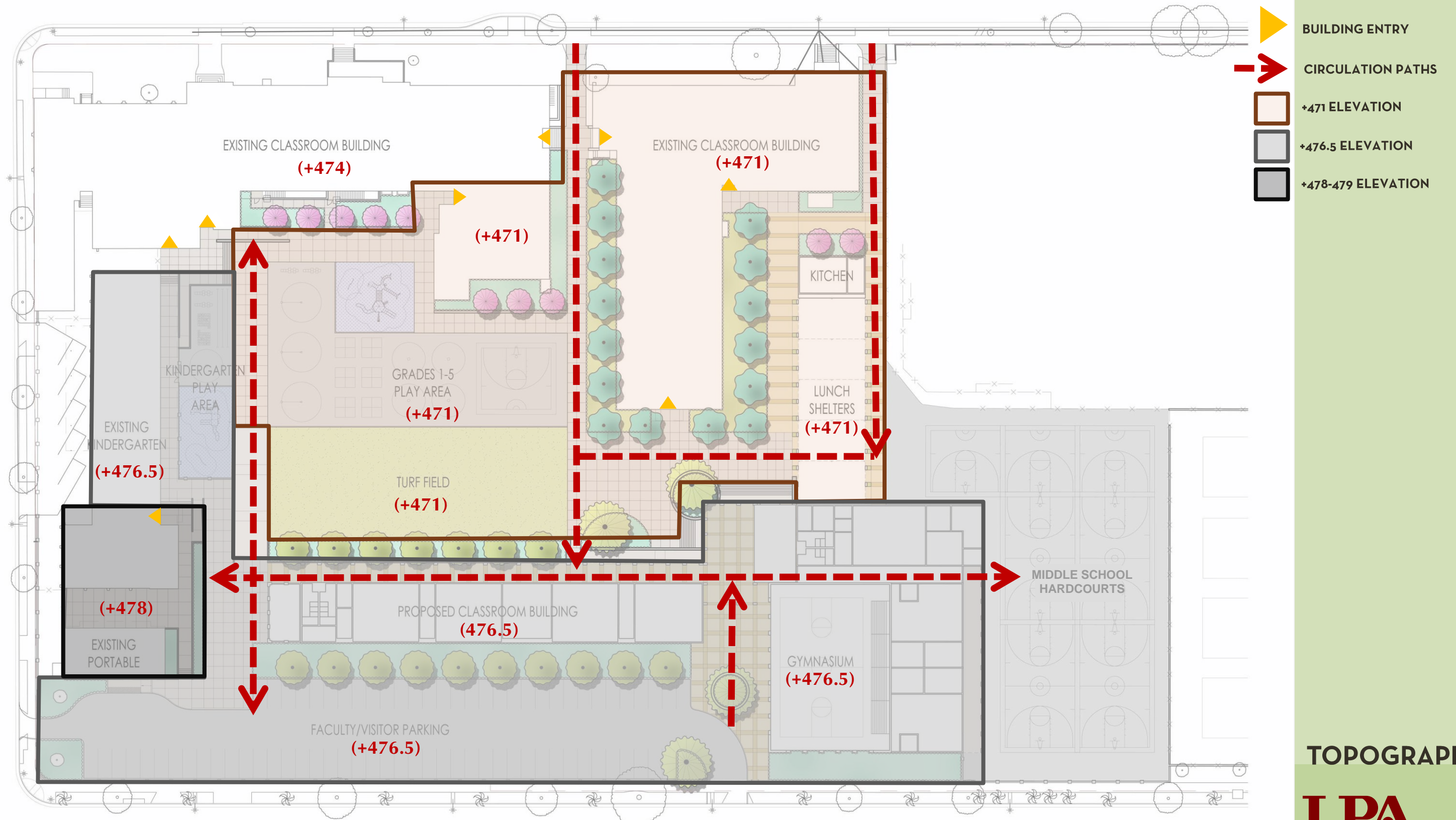


CODE ANALYSIS



schematic design APPROVED SITE PLAN

MCKINLEY
SCHOOL



TOPOGRAPHY



schematic design

APPROVED SITE PLAN

MCKINLEY
SCHOOL



APPROVED SITE

KINDER. PLAY	3,800 sf
GR. 1-5 PLAY	14,000 sf
TURF FIELD	12,000 sf
MS COURTS	11 halves
PARKING	78 spaces

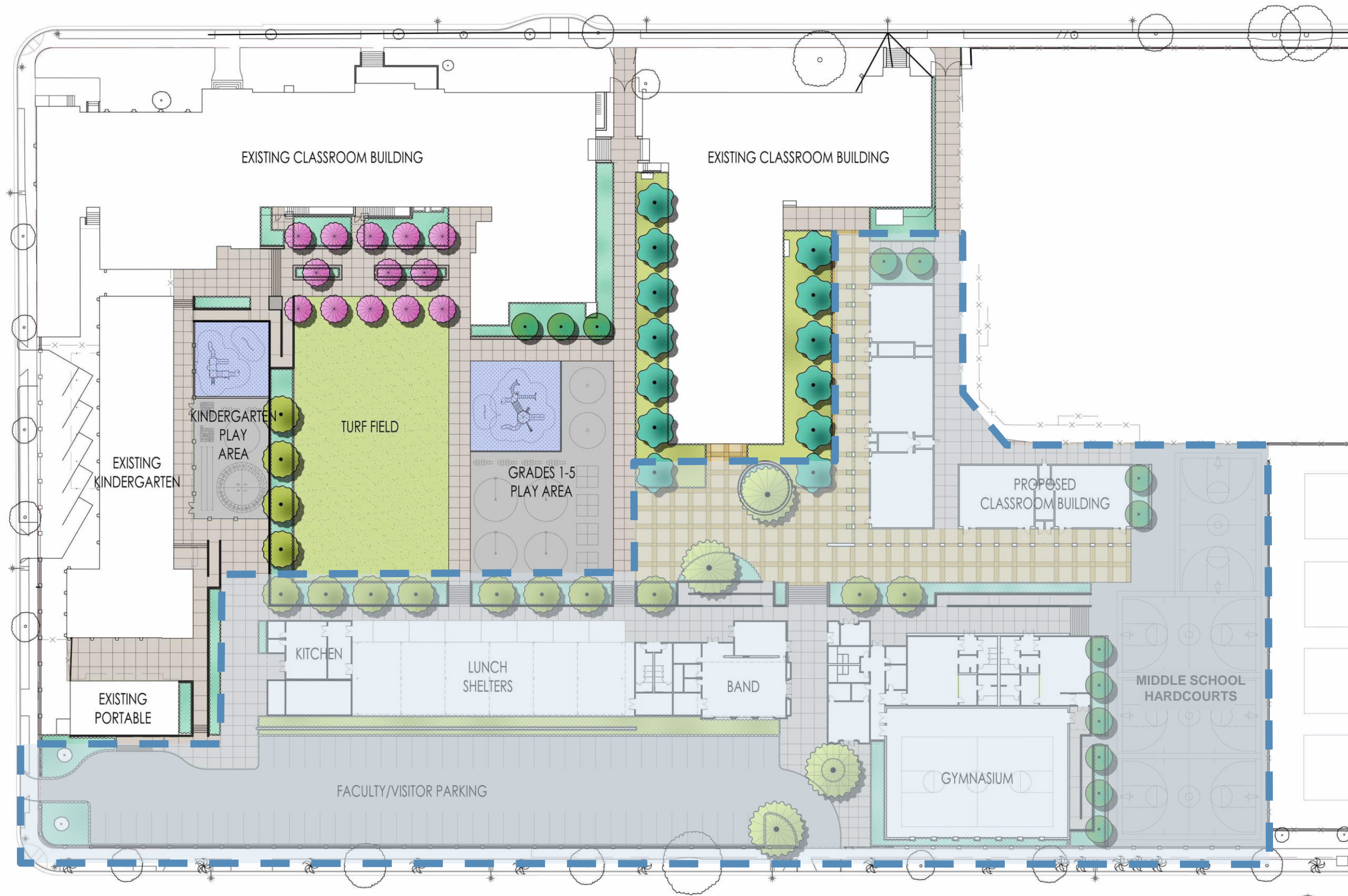
SITE DETAILS

schematic design

RECOMMENDED SITE PLAN

MCKINLEY
SCHOOL

PHASE ONE SCOPE



PHASE ONE

LPA

schematic design

RECOMMENDED SITE PLAN

MCKINLEY
SCHOOL



- FOOD SERVICE
- BAND ROOM
- ATHLETICS
- PROPOSED CLASSROOMS
- CENTRAL PLANT
- SUPPORT SPACES

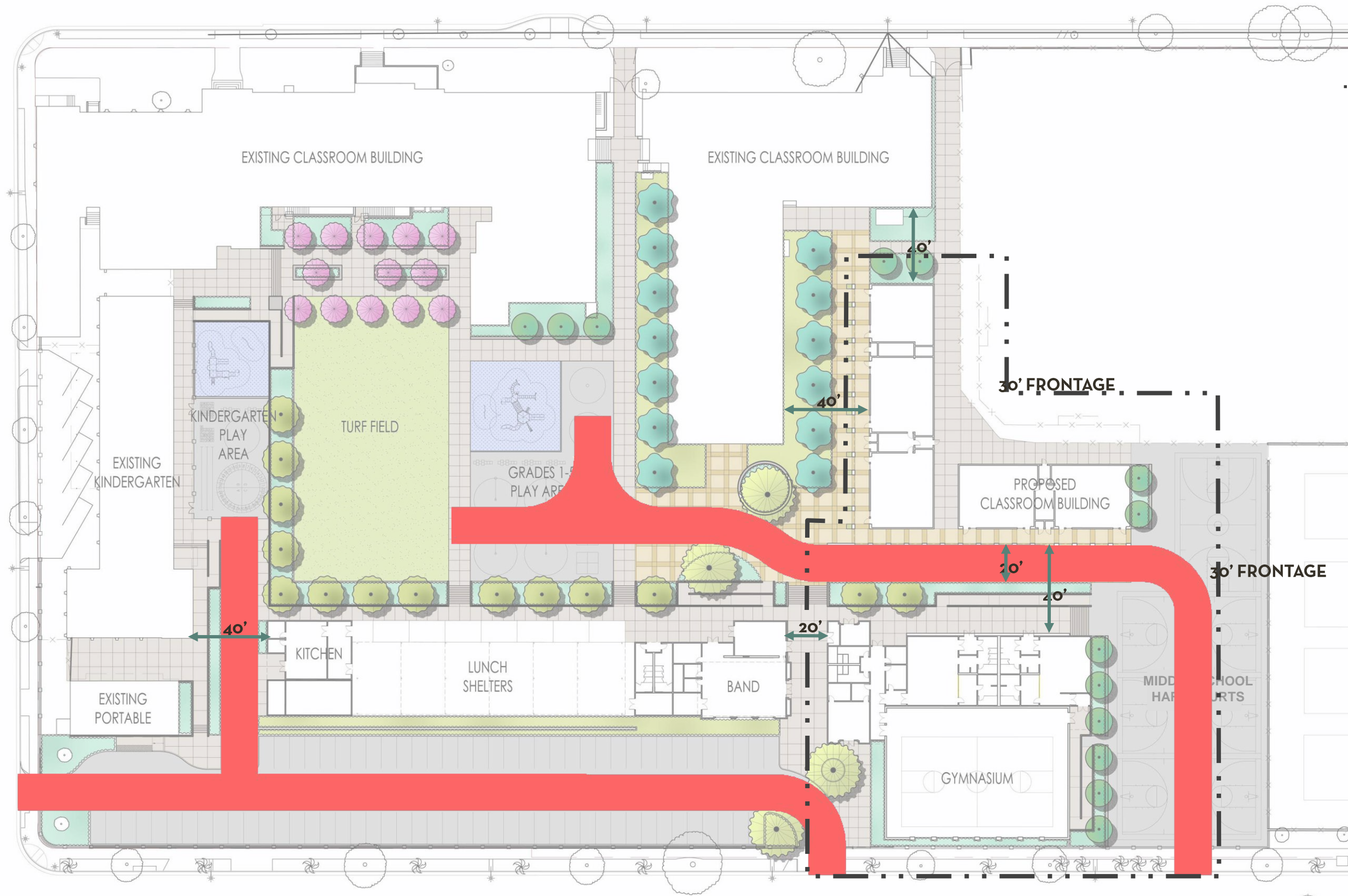
PROGRAM



schematic design

RECOMMENDED SITE PLAN

MCKINLEY
SCHOOL



--- ASSUMED PROP. LINE

■ FIRE ACCESS

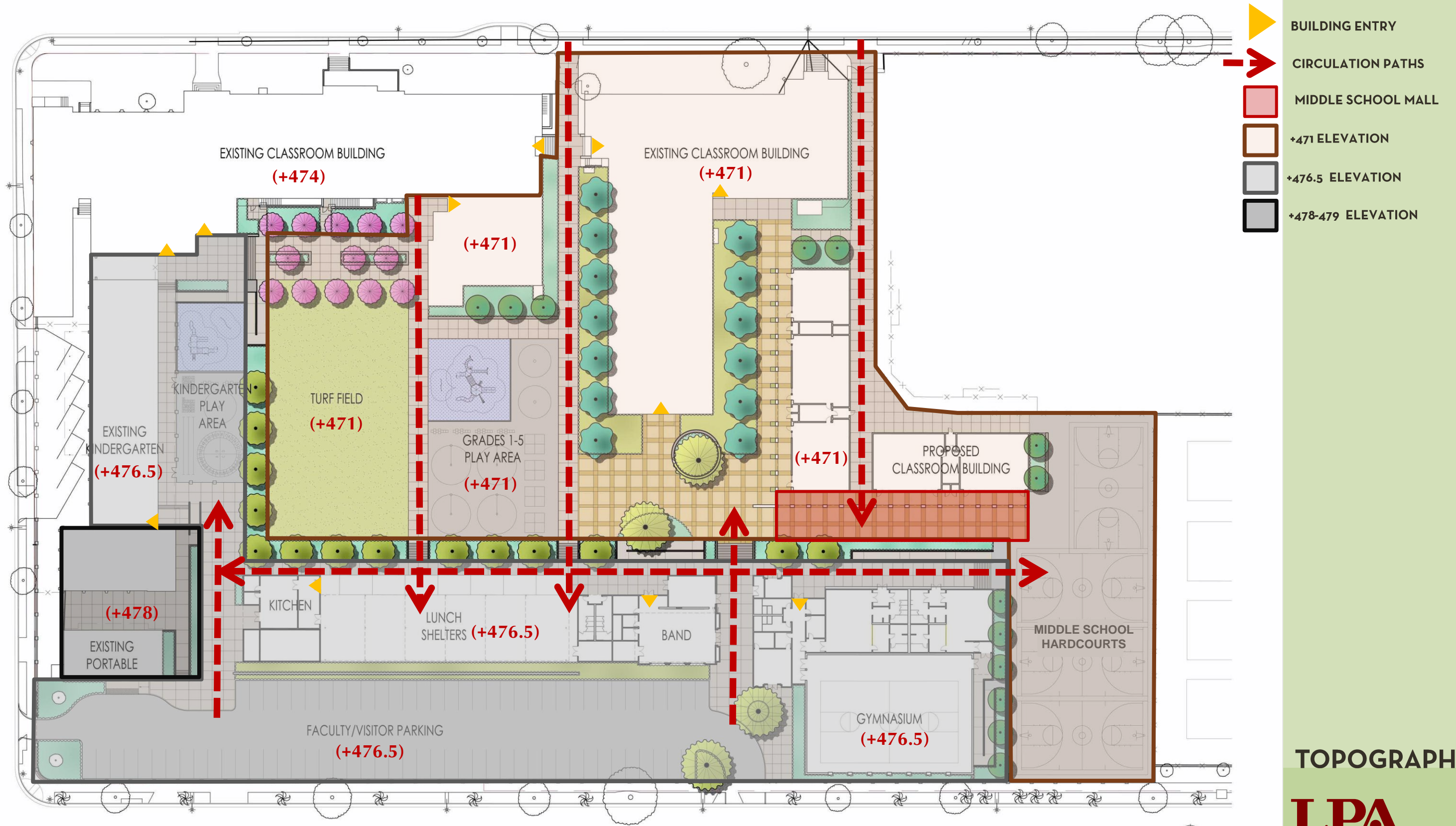
CODE ANALYSIS

LPA

schematic design

RECOMMENDED SITE PLAN

MCKINLEY
SCHOOL



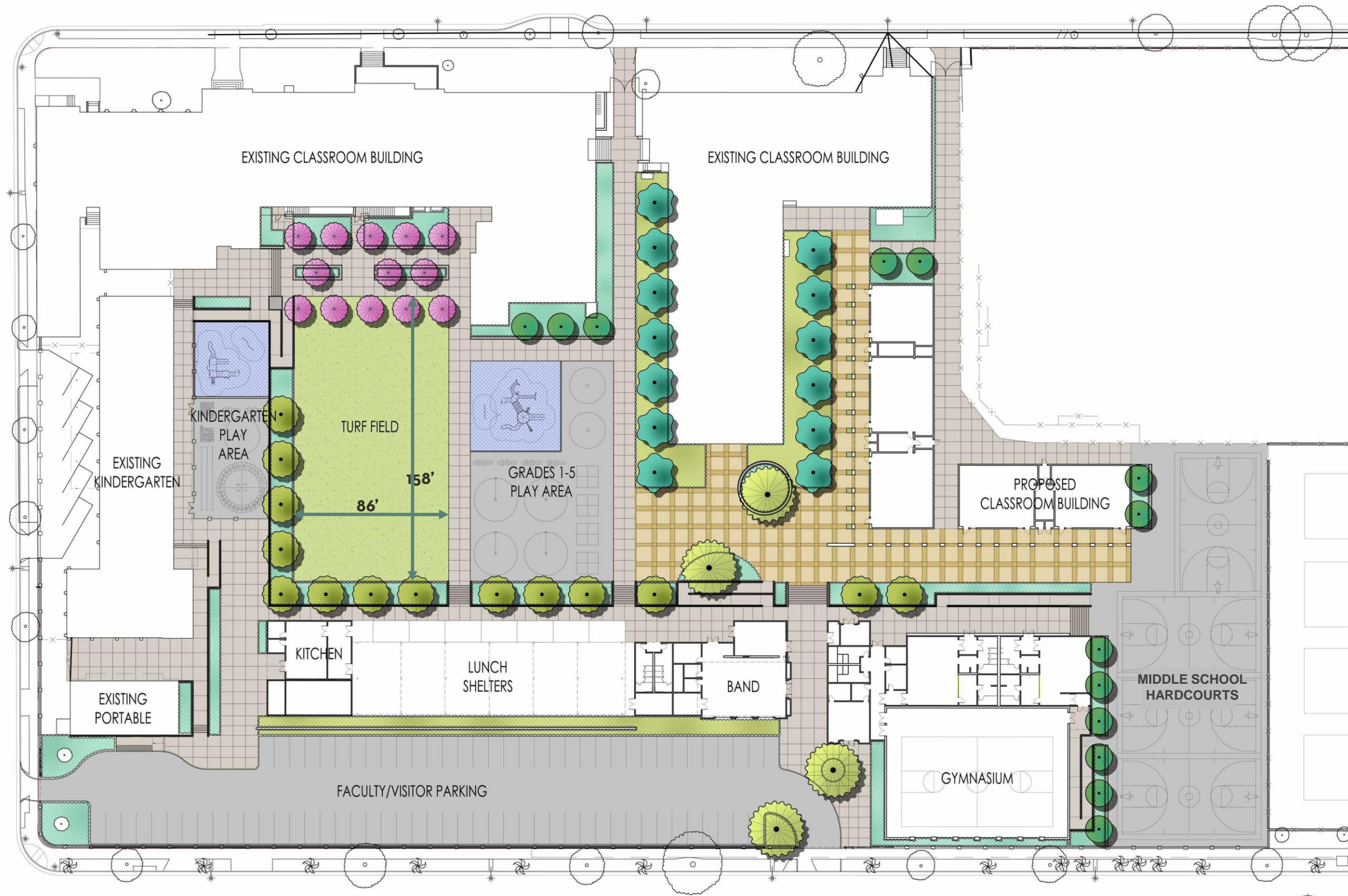
TOPOGRAPHY



schematic design

RECOMMENDED SITE PLAN

MCKINLEY
SCHOOL



RECOMMENDED SITE

KINDER. PLAY	4,700 sf
GR. 1-5 PLAY	9,800 sf
TURF FIELD	13,700 sf
MS COURTS	8 halves
PARKING	84 spaces

SITE DETAILS

next steps

- User Group Meetings - Week of Jan. 4th
 - Band
 - Science
 - PE / Gym
- Schematic Design Presentation - Week of Jan. 18th

LPA



'Creating Sustainable Places and Spaces that enrich the lives of those who use them'