

McKinley School



District Facilities Meeting
13 January 2010

discussion items AGENDA

MCKINLEY
SCHOOL

- Review of Existing Site Plan
- Review of Approved Phase 1 Site Plan
- Recommended Phase 1 Site Plan
- The Architecture
- Budget
- Images
- Next Steps



LPA

campus master plan

EXISTING SITE PLAN

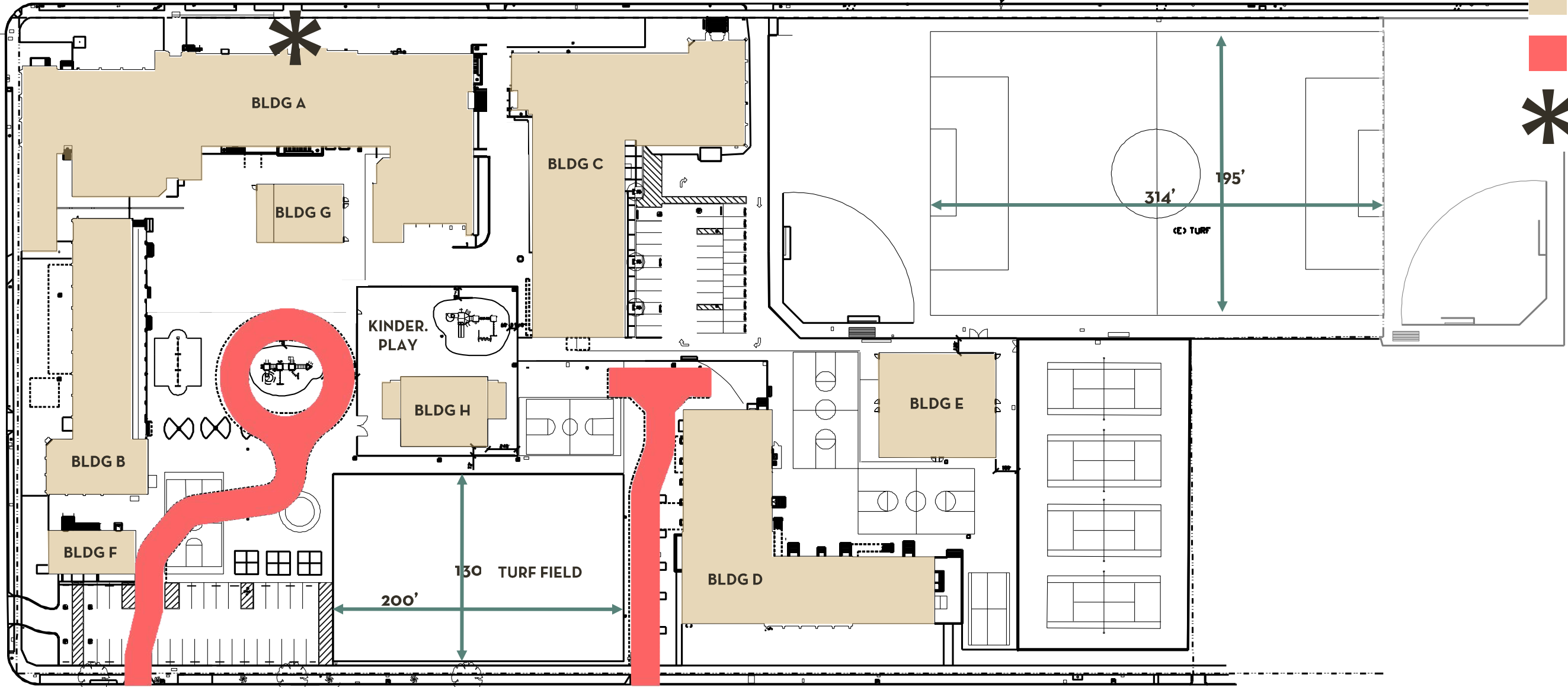
MCKINLEY
SCHOOL

DEL MAR BLVD

OAK KNOLL AVE

(FIRE DEPT. ACCESS FROM STREET)

(E) FIRE HYDRANT



- EXISTING BUILDINGS
- FIRE ACCESS
- MAIN ENTRANCE

EXISTING SITE

| | |
|--------------|-----------|
| KINDER. PLAY | 5,800 sf |
| GR. 1-5 PLAY | 20,000 sf |
| TURF FIELD | 26,000 sf |
| MS COURTS | 6 halves |
| PARKING | 63 spaces |

EL MOLINO AVE

(E) FIRE HYDRANT

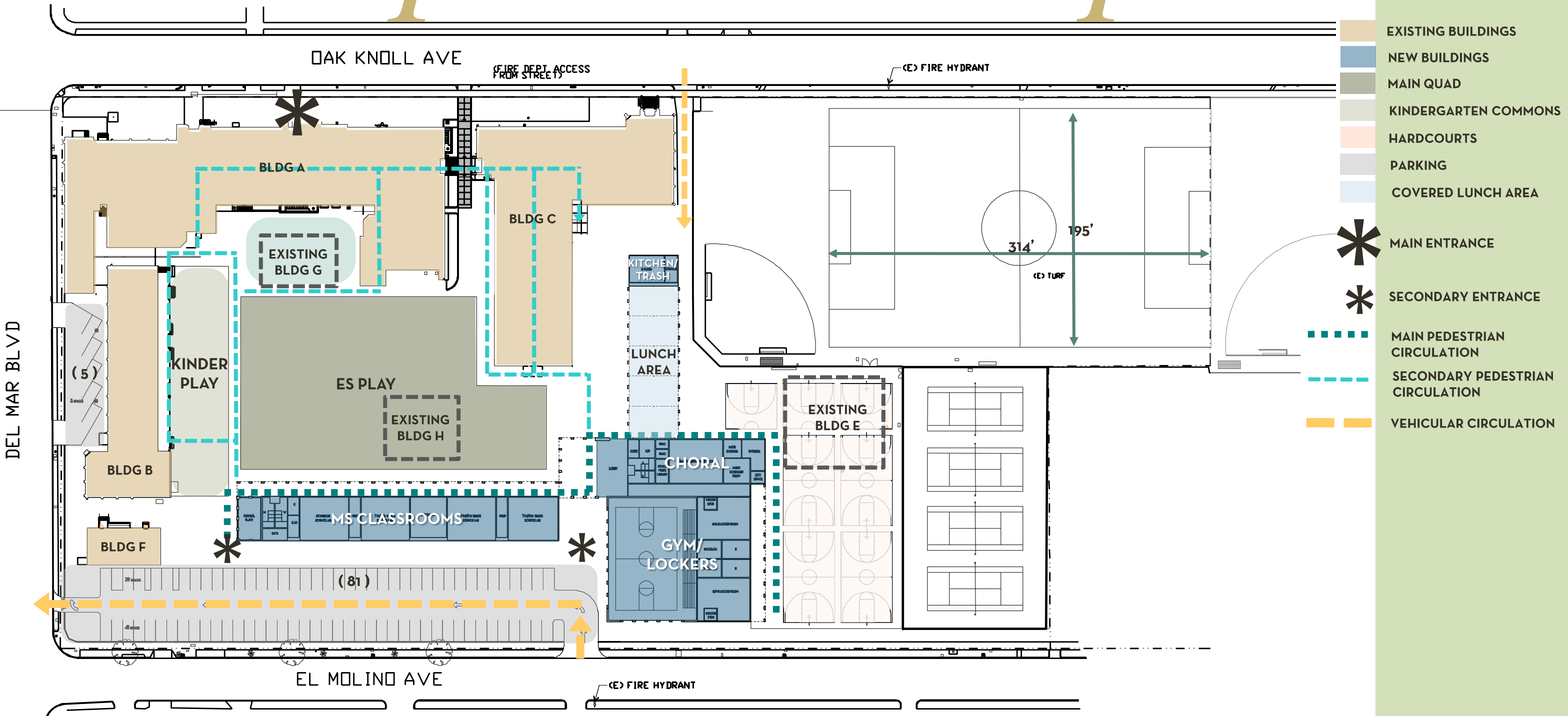
EXISTING



campus master plan

APPROVED MASTER PLAN

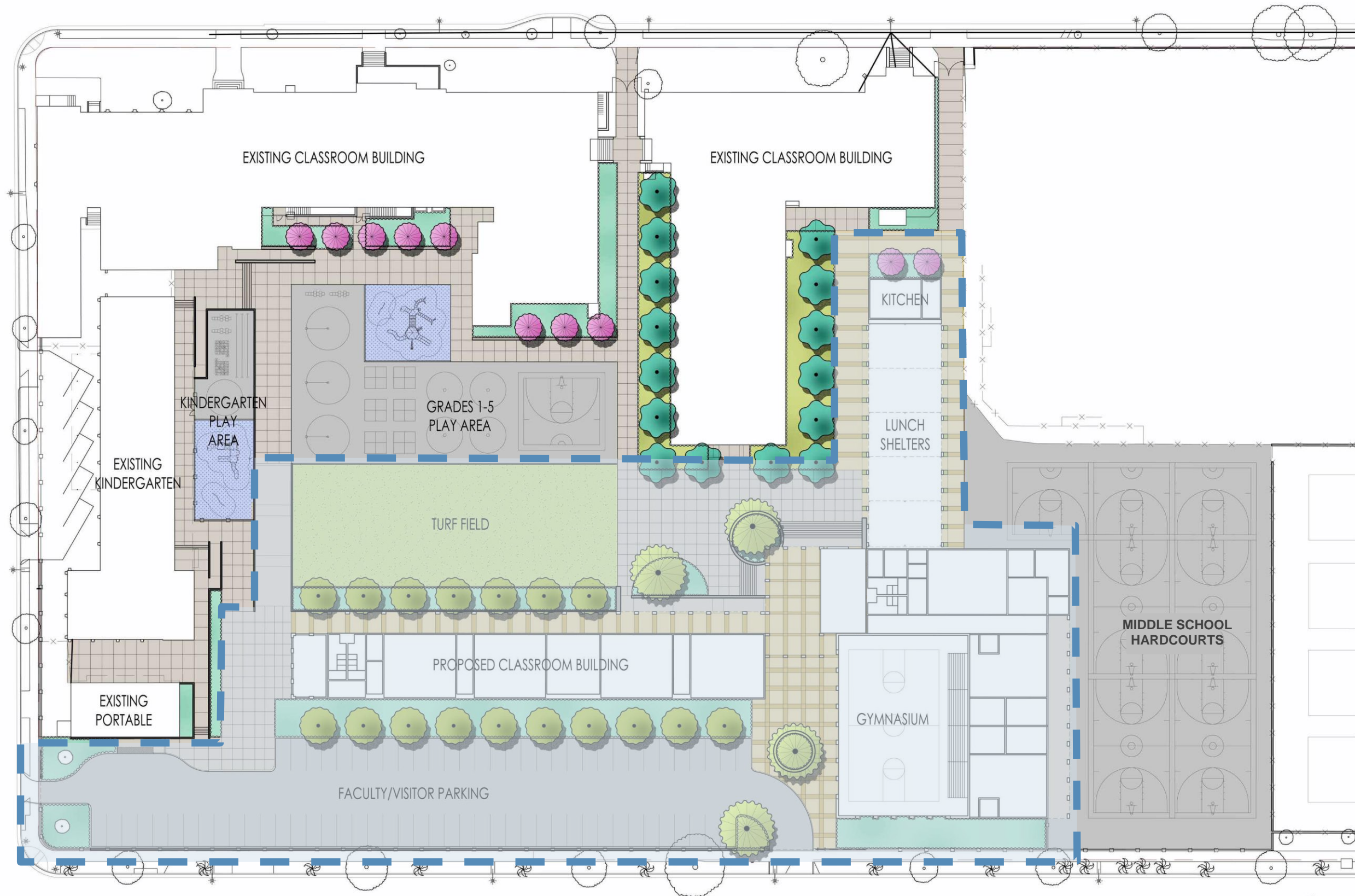
MCKINLEY
SCHOOL



- EXISTING BUILDINGS
- NEW BUILDINGS
- MAIN QUAD
- KINDERGARTEN COMMONS
- HARDCOURTS
- PARKING
- COVERED LUNCH AREA
- ✱ MAIN ENTRANCE
- ✱ SECONDARY ENTRANCE
- MAIN PEDESTRIAN CIRCULATION
- SECONDARY PEDESTRIAN CIRCULATION
- VEHICULAR CIRCULATION

schematic design APPROVED SITE PLAN

MCKINLEY
SCHOOL



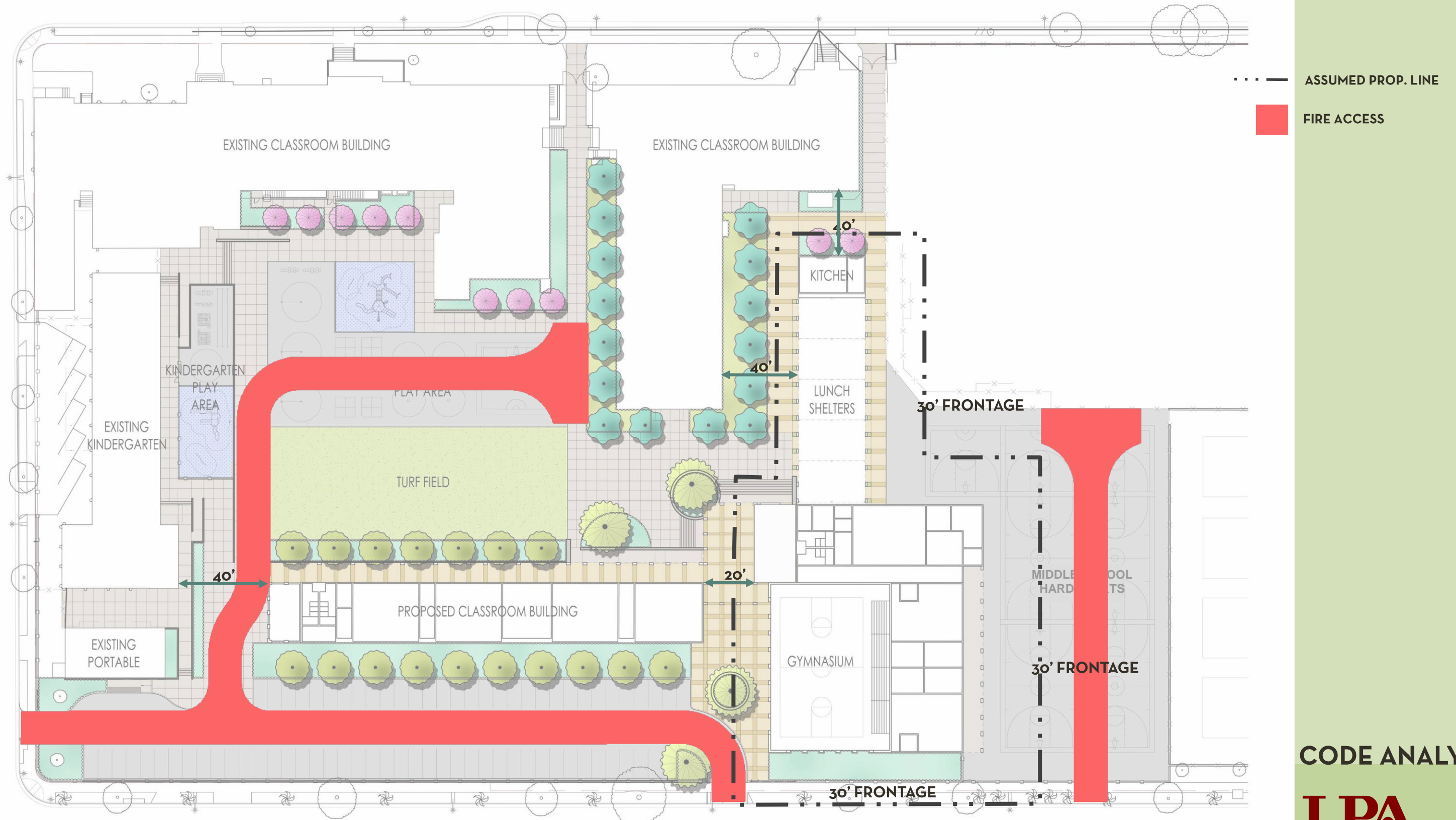
PHASE ONE SCOPE

PHASE ONE



schematic design APPROVED SITE PLAN

MCKINLEY
SCHOOL



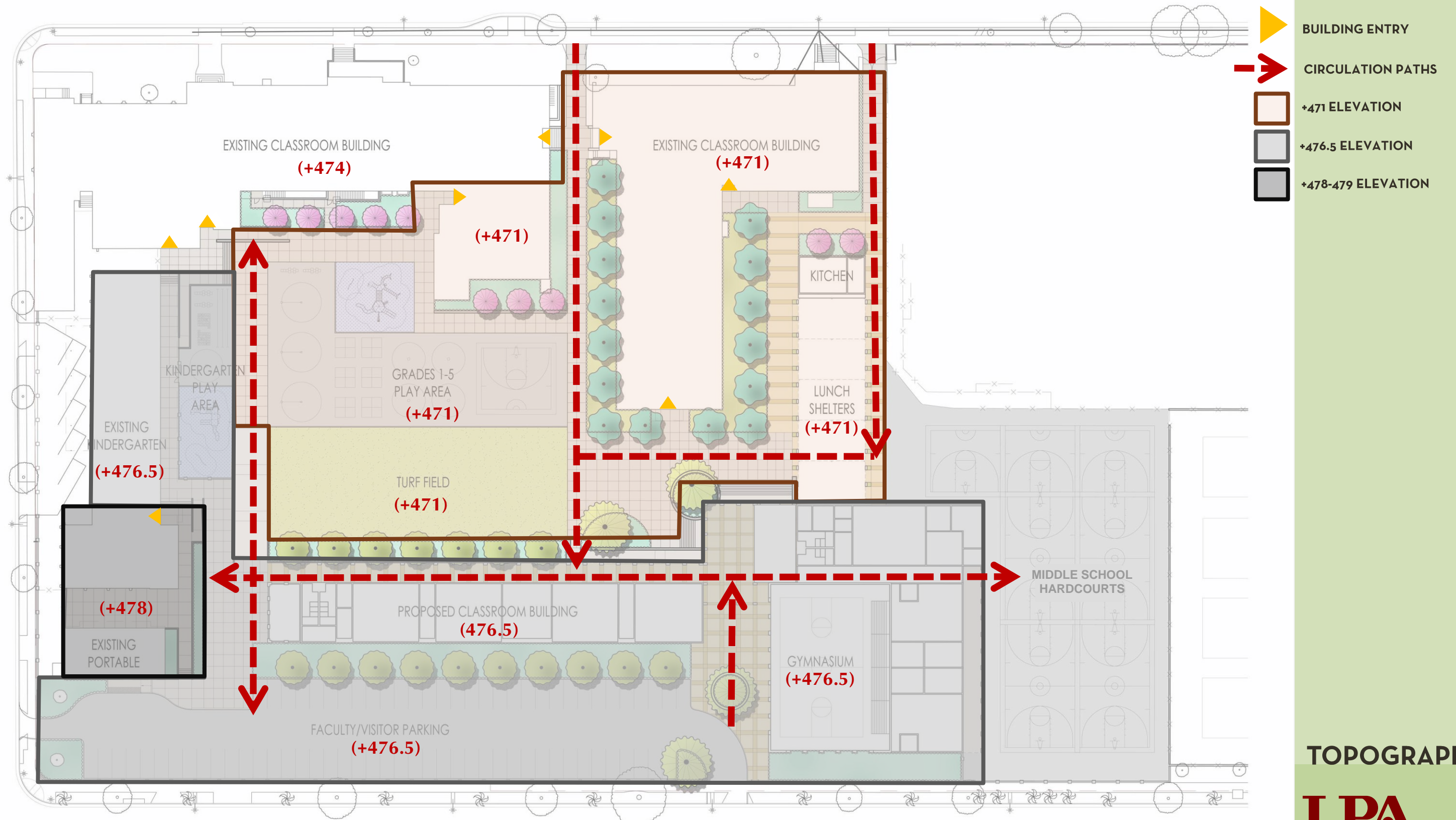
CODE ANALYSIS



schematic design

APPROVED SITE PLAN

MCKINLEY
SCHOOL



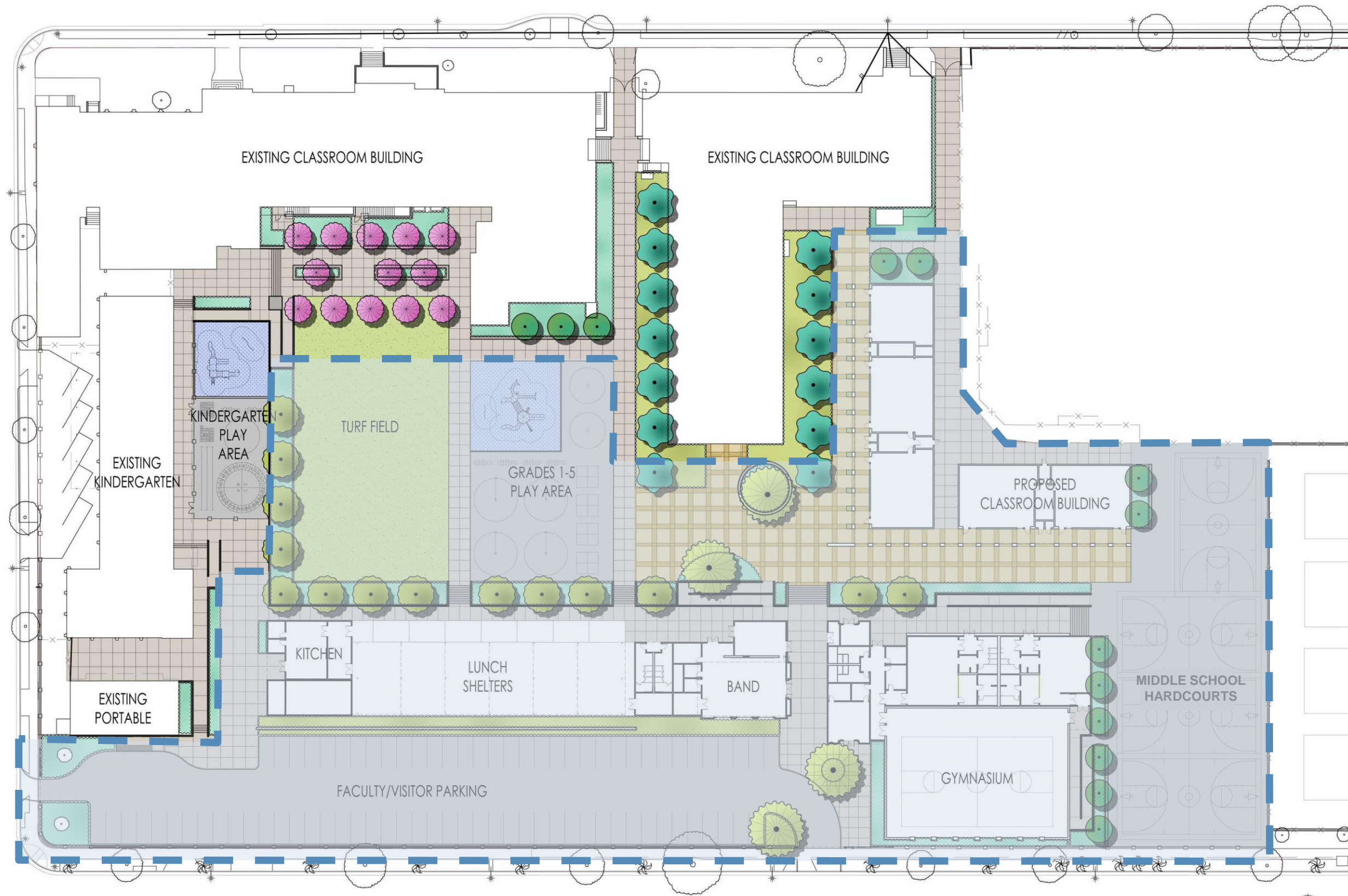
TOPOGRAPHY



schematic design

RECOMMENDED SITE PLAN

MCKINLEY
SCHOOL



PHASE ONE SCOPE

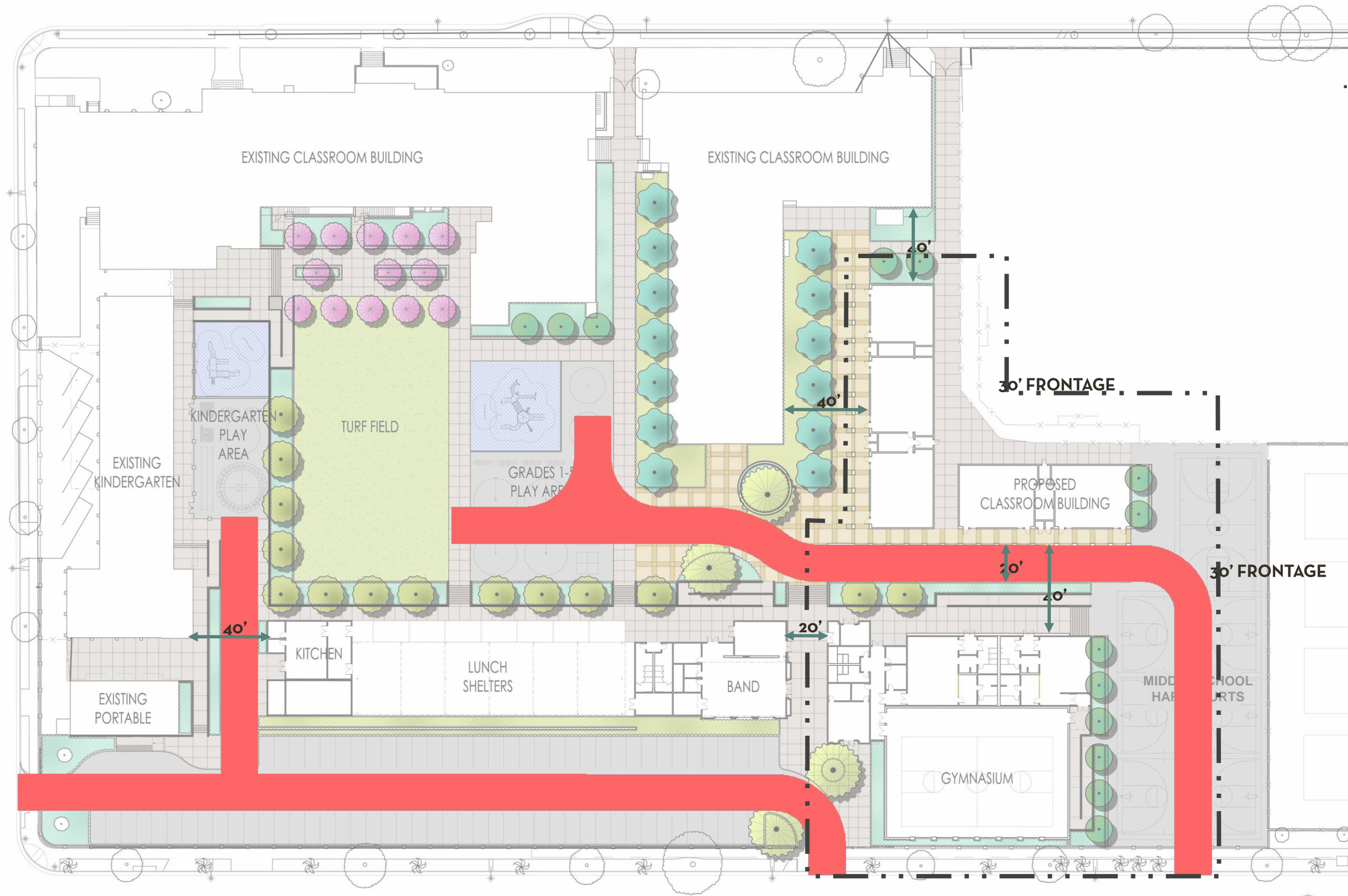
PHASE ONE

LPA

schematic design

RECOMMENDED SITE PLAN

MCKINLEY
SCHOOL



--- ASSUMED PROP. LINE

■ FIRE ACCESS

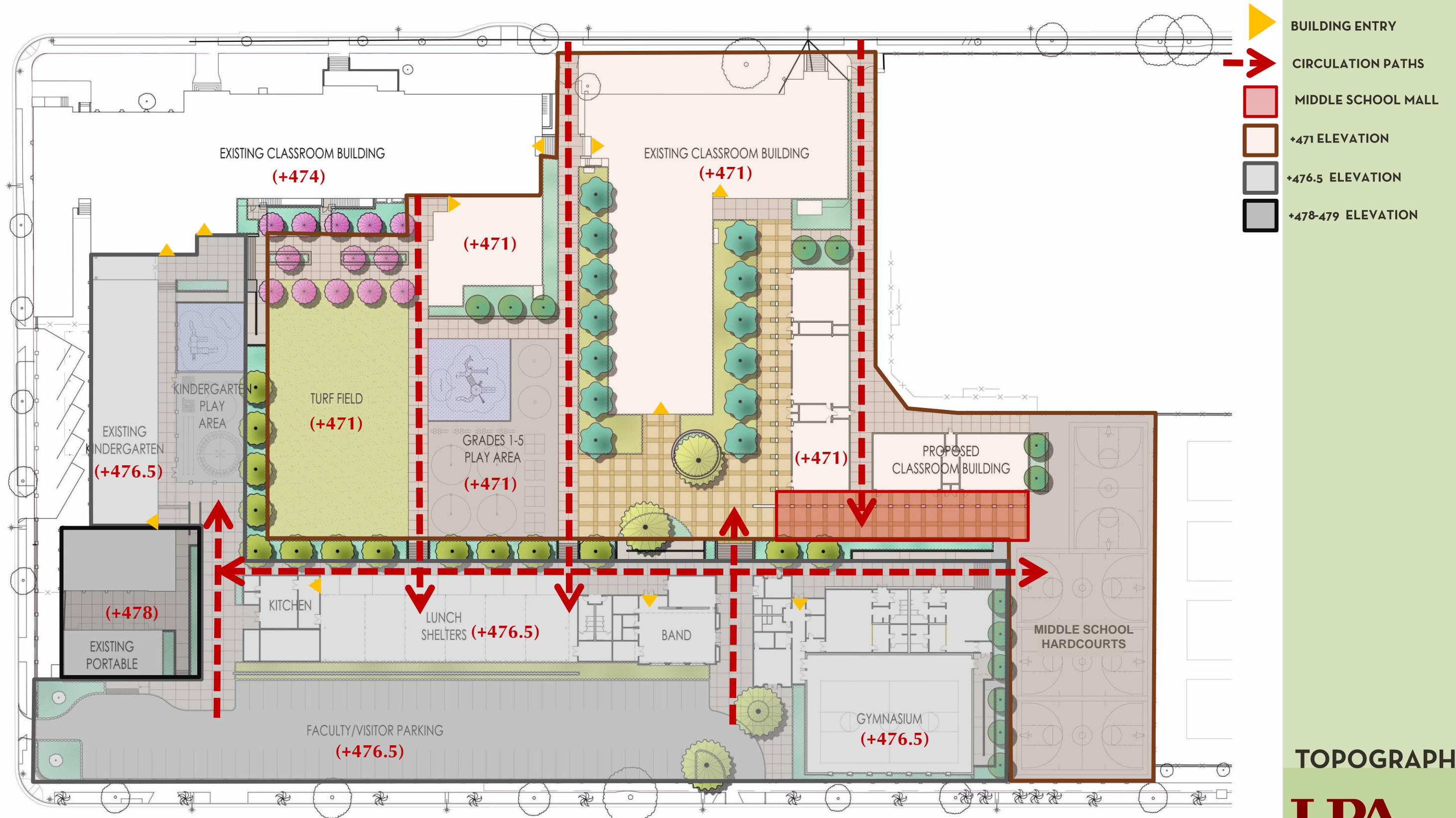
CODE ANALYSIS

LPA

schematic design

RECOMMENDED SITE PLAN

MCKINLEY
SCHOOL



TOPOGRAPHY



schematic design

RECOMMENDED SITE PLAN

MCKINLEY
SCHOOL



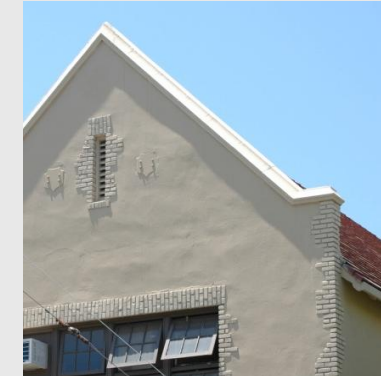
RECOMMENDED SITE

| | |
|--------------|-----------|
| KINDER. PLAY | 4,700 sf |
| GR. 1-5 PLAY | 9,800 sf |
| TURF FIELD | 13,700 sf |
| MS COURTS | 8 halves |
| PARKING | 84 spaces |

SITE DETAILS



MCKINLEY K8



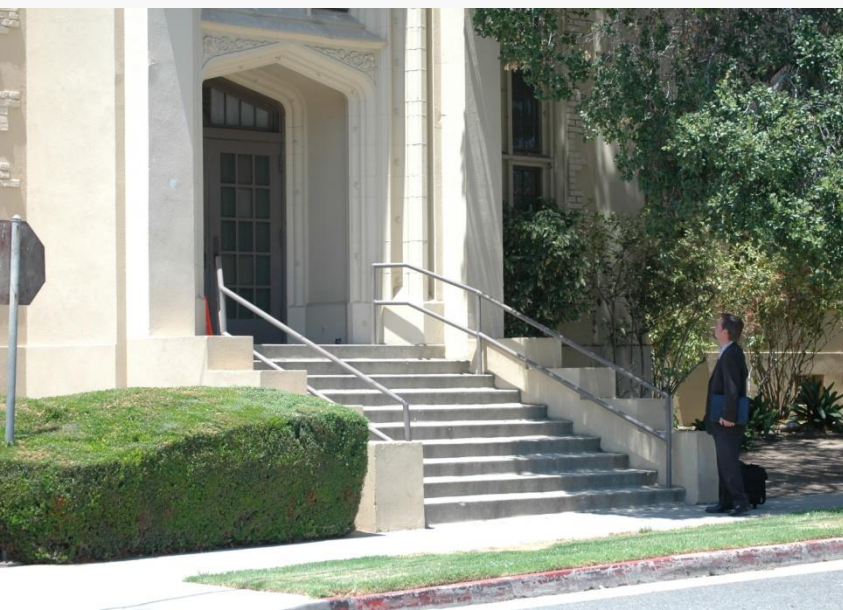
master plan budget

LOCAL BOND PROGRAM

MCKINLEY
SCHOOL

| | | |
|----------------------------------|---|----------------------|
| ● Phase 1 Estimate | | \$12,298,000 |
| ● Phase 2 Estimate | | \$19,400,000 |
| Total Construction Budget | | \$31,636,630* |
| ● Current Cost Estimate | - | \$32,348,000 |
| ● Budget Deficiency | | - \$ 711,370 |

***Note:** Budget will adjust with addition of deferred maintenance funding and subtraction of costs for district central kitchen and other district wide scopes.



schematic design BUDGET

MCKINLEY
SCHOOL

| | |
|---|--------------|
| ● Phase 1 Schematic Estimate | \$14,160,000 |
| ● Phase 2 Remaining Estimate | \$15,909,943 |
| | <hr/> |
| ● District Adjusted Construction Budget * | \$30,060,943 |

***Note:** Based on Master Plan project budget update, dated November 24, 2009



schematic design IMAGES

MCKINLEY
SCHOOL



BIRDSEYE

schematic design IMAGES

MCKINLEY
SCHOOL



TOWARD BAND BLDG.

schematic design IMAGES

MCKINLEY
SCHOOL



TOWARD MS SCIENCE

LPA

• thank you

LPA



'Creating Sustainable Places and Spaces that enrich the lives of those who use them'

schematic design

APPROVED SITE PLAN

MCKINLEY
SCHOOL



APPROVED SITE

| | |
|--------------|-----------|
| KINDER. PLAY | 3,800 sf |
| GR. 1-5 PLAY | 14,000 sf |
| TURF FIELD | 12,000 sf |
| MS COURTS | 11 halves |
| PARKING | 78 spaces |

SITE DETAILS