

Pasadena Unified School District Facilities Master Plan Quarterly Update September 17, 2009



Facilities Projects/Costs

2009-2019

DESCRIPTION OF FACILITY NEEDS	PROJECT SCHEDULE	COST (\$ in millions)			A V A I L	COMMENTS
		Master Plan 10/08	\$ Encum To Date	Sep 2009 Estimate		

COMPLETED PROJECTS:

Asset Sales Fund – Various Pre-Bond Projects	7-01-08 to 8-31-09		2.69		(2.69)	
Developer Fees - Various Pre-Bond Projects	7-01-08 to 8-31-09		0.00			
Deferred Maintenance – Various Projects	7-01-08 to 8-31-09		0.05		(0.05)	
Food Service Fund	7-01-08 to 8-31-09		0.00			
Measure Y – Various Projects	7-01-08 to 8-31-09		0.00			
Williams Settlement Projects - \$1.2 million completed	7-01-08 to 8-31-09		0.00			
Measure TT	7-01-08 to 8-31-09		0.01		(0.01)	

PROJECTS IN PROGRESS:

<i>Jefferson</i>	7-01-08 to 8-31-09	12.5	0.00	12.5	12.50	
<i>Madison</i>	7-01-08 to 8-31-09	18.5	0.01	18.5	18.49	
<i>Sierra Madre Lower</i>	7-01-08 to 8-31-09	6.0	0.00	6.0	6.00	

Facilities Projects/Costs

2009-2019

DESCRIPTION OF FACILITY NEEDS	PROJECT SCHEDULE	COST (\$ in millions)			A V A I L	COMMENTS
		Master Plan 10/08	\$ Encum To Date	Sep 2009 Estimate		

PROJECTS IN PROGRESS

Washington Accelerated	7-01-08 to 8-31-09	17.4	0.00	17.4	17.40	
Willard	7-01-08 to 8-31-09	5.7	1.17	5.7	4.53	
Altadena	7-01-08 to 8-31-09	10.9	0.06	10.9	10.84	
Burbank	7-01-08 to 8-31-09	5.3	0.06	5.3	5.24	
Cleveland	7-01-08 to 8-31-09	4.4	0.20	4.4	4.20	
Don Benito	7-01-08 to 8-31-09	5.9	0.00	5.9	5.90	
Field	7-01-08 to 8-31-09	3.8	0.00	3.8	3.80	
Franklin	7-01-08 to 8-31-09	2.9	0.01	2.9	2.89	
Hamilton	7-01-08 to 8-31-09	5.2	0.01	5.2	5.19	
Jackson	7-01-08 to 8-31-09	5.1	0.04	5.1	5.06	

Facilities Projects/Costs

2009-2019

DESCRIPTION OF FACILITY NEEDS	PROJECT SCHEDULE	COST (\$ in millions)			A V A I L	COMMENTS
		Master Plan 10/08	\$ Encum To Date	Sep 2009 Estimate		

PROJECTS IN PROGRESS

Loma Alta	7-01-08 to 8-31-09	3.6	0.41	3.6	3.19	
Longfellow	7-01-08 to 8-31-09	5.1	0.00	5.1	5.10	
Roosevelt	7-01-08 to 8-31-09	8.5	0.01	8.5	8.49	
San Rafael	7-01-08 to 8-31-09	7.8	0.32	7.8	7.48	
McKinley	7-01-08 to 8-31-09	39.7	0.02	39.7	39.68	
Norma Coombs	7-01-08 to 8-31-09	5.1	0.05	5.1	5.05	
Webster	7-01-08 to 8-31-09	3.9	0.00	3.9	3.90	
Eliot	7-01-08 to 8-31-09	7.9	0.01	7.9	7.89	
Sierra Madre Upper	7-01-08 to 8-31-09	38.7	0.02	38.7	38.68	

Facilities Projects/Costs

2009-2019

DESCRIPTION OF FACILITY NEEDS	PROJECT SCHEDULE	COST (\$ in millions)			A V A I L	COMMENTS
		Master Plan 10/08	\$ Encum To Date	Sep 2009 Estimate		

PROJECTS IN PROGRESS

Washington Middle	7-01-08 to 8-31-09	24.5	0.02	24.5	24.48	
Wilson	7-01-08 to 8-31-09	7.4	0.58	7.4	6.82	
Blair	7-01-08 to 8-31-09	51.7	1.21	51.7	50.49	
Marshall	7-01-08 to 8-31-09	22.2	0.01	22.2	22.19	
Muir	7-01-08 to 8-31-09	24.0	1.35	24.0	22.65	
Pasadena	7-01-08 to 8-31-09	35.6	1.69	35.6	33.91	
Developer Fees - Various Pre-Bond Projects	7-01-08 to 8-31-09	0.00	0.00	0.00	0.00	

Facilities Projects/Costs

2009-2019

DESCRIPTION OF FACILITY NEEDS	PROJECT SCHEDULE	COST (\$ in millions)			A V A I L	COMMENTS
		Master Plan 10/08	\$ Encum To Date	Sep 2009 Estimate		

PROJECTS IN PROGRESS

Culinary/Central Kitchen	7-01-08 to 8-31-09	13.0	0.06	13.0	12.94	
Williams Settlement Projects	7-01-08 to 8-31-09	13.0	0.81	13.0	12.19	
CTE Projects	7-01-08 to 8-31-09	30.0	0.00	30.0	30.00	
Energy and Water Savings Projects	7-01-08 to 8-31-09	5.0	0.57	5.0	4.43	
Technology Projects	7-01-08 to 8-31-09	5.0	0.00	5.0	5.00	
Deferred Maintenance	7-01-08 to 8-31-09	15.0	2.30	15.0	12.70	
Portables remove and replace, if applicable	7-01-08 to 8-31-09	1.0	0.06	1.0	0.94	
Painting and Exterior Appearance Upgrades	7-01-08 to 8-31-09	2.0	0.16	2.0	1.84	
Seismic Upgrades	7-01-08 to 8-31-09	10.0	0.00	10.0	10.00	

Facilities Projects/Costs

2009-2019

DESCRIPTION OF FACILITY NEEDS	PROJECT SCHEDULE	COST (\$ in millions)			A V A I L	COMMENTS
		Master Plan 10/08	\$ Encum To Date	Sep 2009 Estimate		

PROJECTS IN PROGRESS

Bogen Clock Speaker System	7-01-08 to 8-31-09	1.6	1.45	1.6	0.15	
Other Project Related Expense	7-01-08 to 8-31-09	7.7	1.38	7.7	6.32	
Bogen Clock Speaker System Reallocation*	7-01-08 to 8-31-09	(1.6)		(1.60)	(1.60)	
Culinary/Central Kitchen Reallocation*	7-01-08 to 8-31-09	(13.0)		(13.0)	(13.00)	
Williams Settlement Projects*	7-01-08 to 8-31-09	(13.0)	1.22	(13.0)	(14.22)	
QZAB/E-RATE District Tech. Infrastructure Project	7-01-08 to 8-31-09	7.6	6.99	7.6	0.61	
Pre-FMP Projects – Asset Sales	7-01-08 to 8-31-09	3.8	1.27	3.8	2.53	
Pre-FMP – Measure Y	7-01-08 to 8-31-09	3.0	1.66	3.0	1.34	
<u>Total Facilities Master Plan Projects</u>		465.0	18.02	465.0	446.98	
Pre- Master Plan Projects		14.4	9.92	14.4	4.48	
<u>Total Facility Projects</u>		479.4	27.94	479.4	451.46	

*Reallocated from various sites

Funding Plan

2009-2019

SOURCE OF FUNDS	Funds (\$ in millions)		COMMENTS
	Master Plan 10/06 Rev	Sep 2009 Estimate	
1. General Obligation Bond (Measure TT)	\$350.00	350.00	Does not includes interest on investment
2. Developer Fees	20.00	20.00	Assumes Level I through plan Horizon
3. Williams Settlement Funding	13.00	13.00	Assumes State Bond in Future
4. Deferred Maintenance (State/District Funding)	15.00	15.00	District Contribution @ 100% and State match @ 50%
5. State Modernization and other Grants	25.00	25.00	All types of State/Federal funding except CTE
6. State/Joint Use Partnership Grants	6.00	6.00	2 Gyms at \$3 Million
7. Joint Use/Partnership Grants – Athletic Fields – 50%	4.00	4.00	4 artificial surface fields at High schools
8. State Funding - Seismic	5.00	5.00	Will vary based on projects undertaken
9. Career Technical Match	15.00	15.00	15 Academies @ \$1 Million; State and Local
10. State Funding – modernization / growth	12.00	12.00	Balance @ 10/01/08
Total Funds	\$465.00*	\$465.00*	
Pre- Master Plan Funds	14.4	14.4	
<u>Total Facility Funds</u>	479.4	479.4	

*No fund balances include interest income except as needed to cover estimate shortfalls

Bottom Line

- **Master Plan expected cost \$465.00 million**
- **Master Plan expected revenue \$465.00 million**
- **No Projected Gap**
- **Approximately \$28 Million Committed since 7/01/08**
- **Over 90% of projects on time and within budget**
- **Overall Summer projects are \$3.2 million below Facilities Master plan allocation**

Emerging Issues/Milestones

- **Bonds sold - \$125 Million with a tax rate for first year of \$38.83/\$100,000 Assessed Valuation. Tax Rate Statement estimate was \$40.33/ \$100,000 Assessed Valuation**
- **DSA still experiencing delays in approval of documents, which slowed down the approval of shade structures.**
- **Major Projects in design:**
 - **Cleveland Modernization./Upgrades - \$3.6 Million**
 - **Culinary Academy/Central Kitchen - \$13 Million**
 - **Blair Middle School - \$14 Million**
 - **Sierra Madre Middle School - \$28 Million**

PUSD

SUMMER UPDATES 2009

LOMA ALTA PRESCHOOL PROJECT – Summer 2009

BEFORE.....



.....AFTER



..... BEFORE



AFTER

BEFORE.....



.....AFTER



.....BEFORE

AFTER

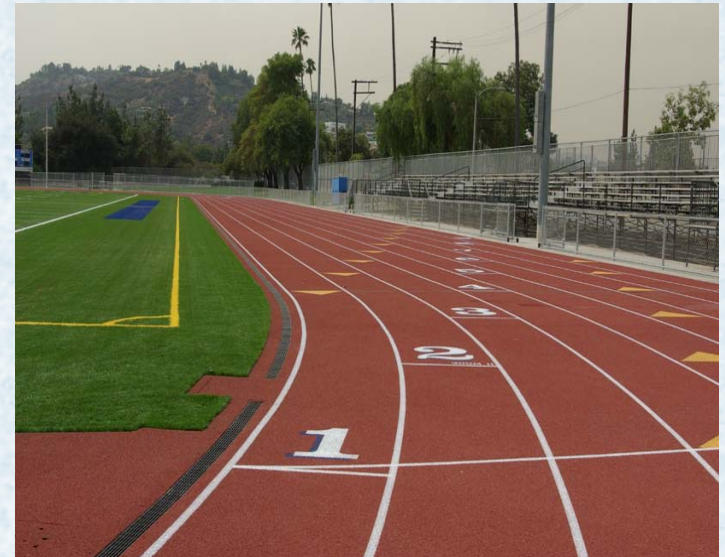


John Muir High School Track & Field Upgrade



BEFORE

AFTER



SAN RAFAEL – Summer 2009 Upgrades



BEFORE

AFTER



BEFORE.....



.....AFTER



..... BEFORE

AFTER



Pasadena High School Track & Field Upgrade



BEFORE

AFTER



WILLARD – Summer 2009 Upgrades



BEFORE

AFTER





..... BEFORE

AFTER





..... BEFORE

AFTER





..... BEFORE

AFTER



BLAIR MS EAST ELEVATION



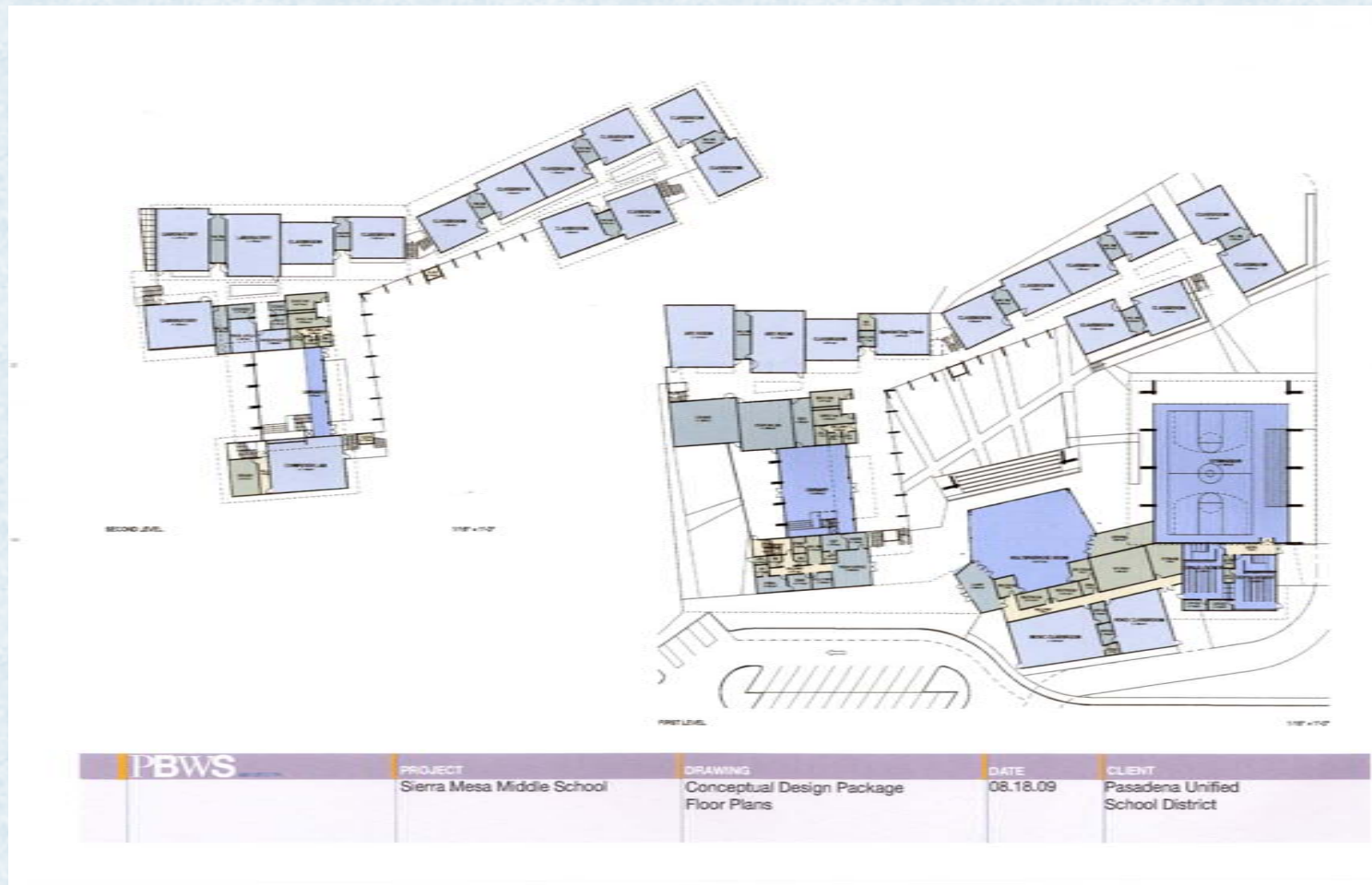
BLAIR MS WEST ELEVATION



SIERRA MADRE MODEL STREET VIEW



SIERRA MADRE FLOOR PLAN

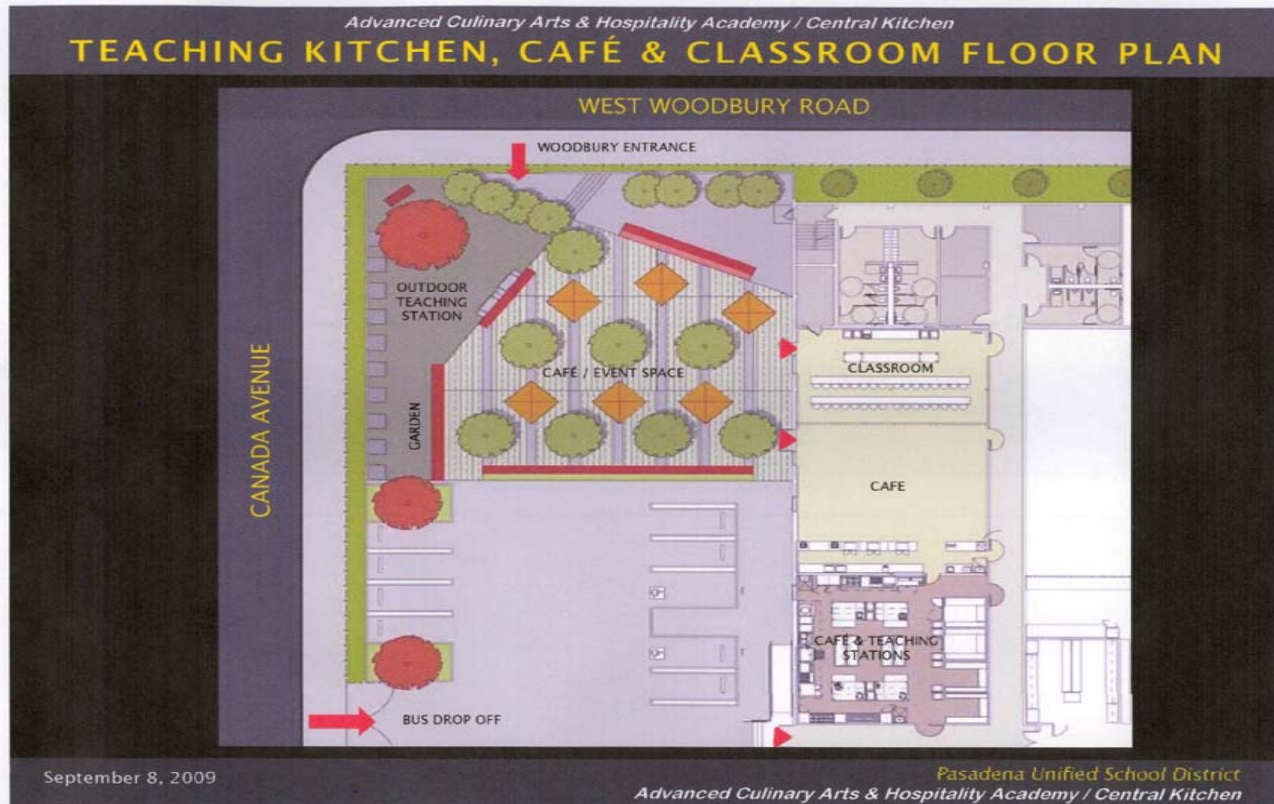


SIERRA MADRE SITE PLAN



PBWS	PROJECT Sierra Mesa Middle School	DRAWING Conceptual Design Package Site Plan	DATE 08.18.09	CLIENT Pasadena Unified School District
-------------	---	--	-------------------------	--

CENTRAL KITCHEN



CENTRAL KITCHEN BUILDING ELEVATIONS

Advanced Culinary Arts & Hospitality Academy / Central Kitchen
BUILDING ELEVATIONS



East Elevation



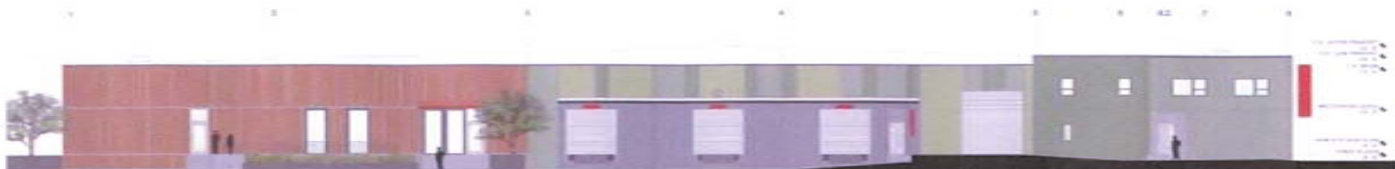
South Elevation

September 8, 2009

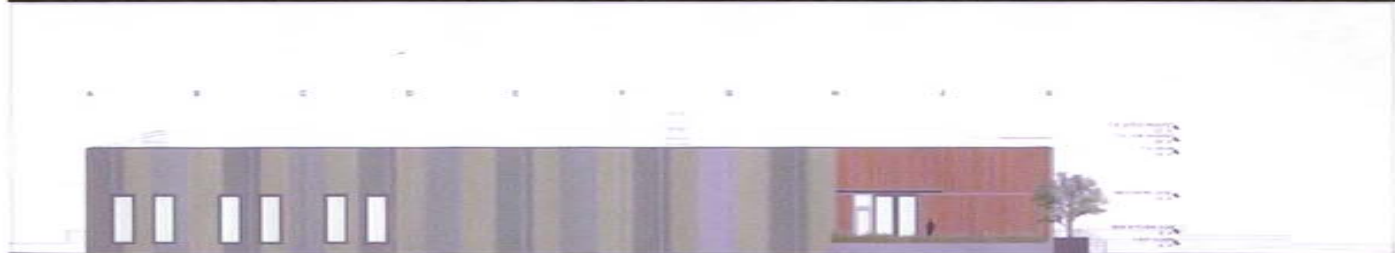
Pasadena Unified School District
Advanced Culinary Arts & Hospitality Academy / Central Kitchen

Advanced Culinary Arts & Hospitality Academy / Central Kitchen

BUILDING ELEVATIONS



East Elevation

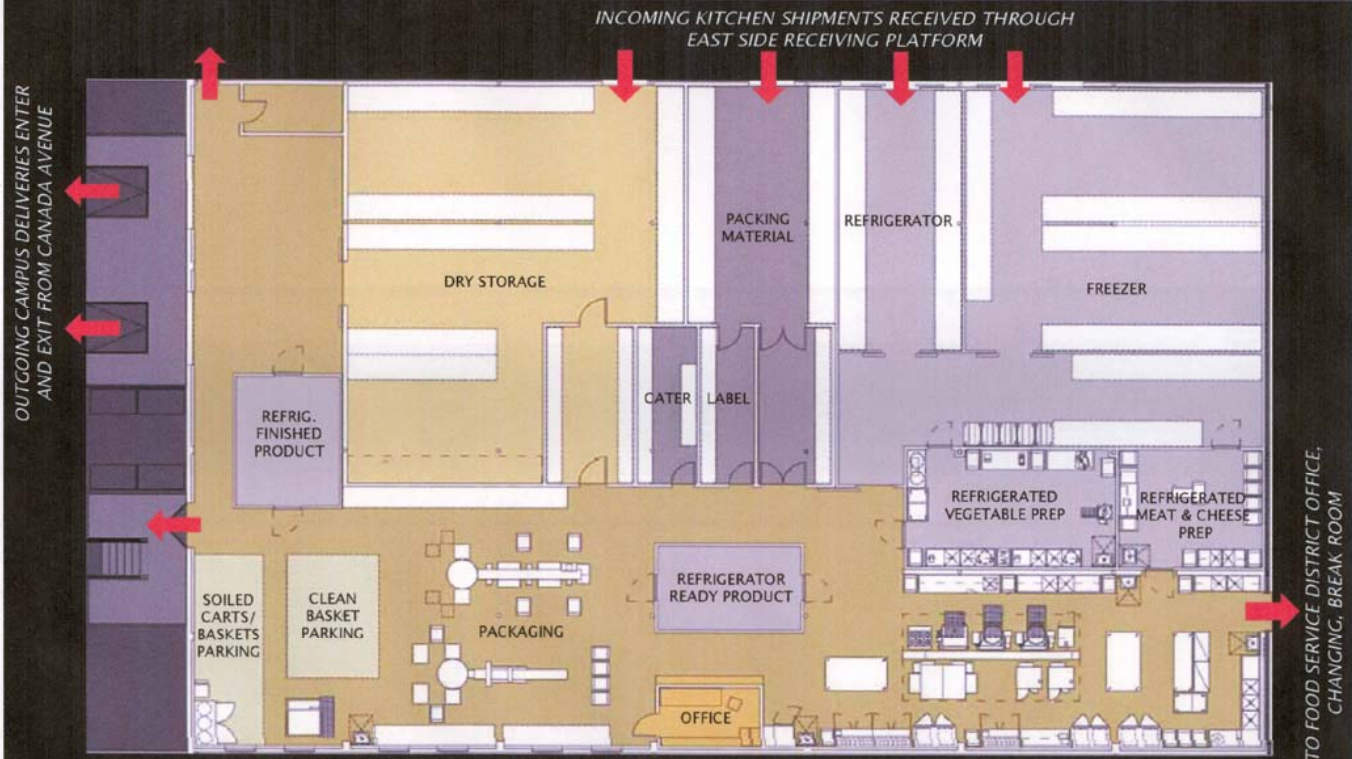


South Elevation

September 8, 2009

Pasadena Unified School District
Advanced Culinary Arts & Hospitality Academy / Central Kitchen

Advanced Culinary Arts & Hospitality Academy / Central Kitchen
CENTRAL KITCHEN FLOOR PLAN



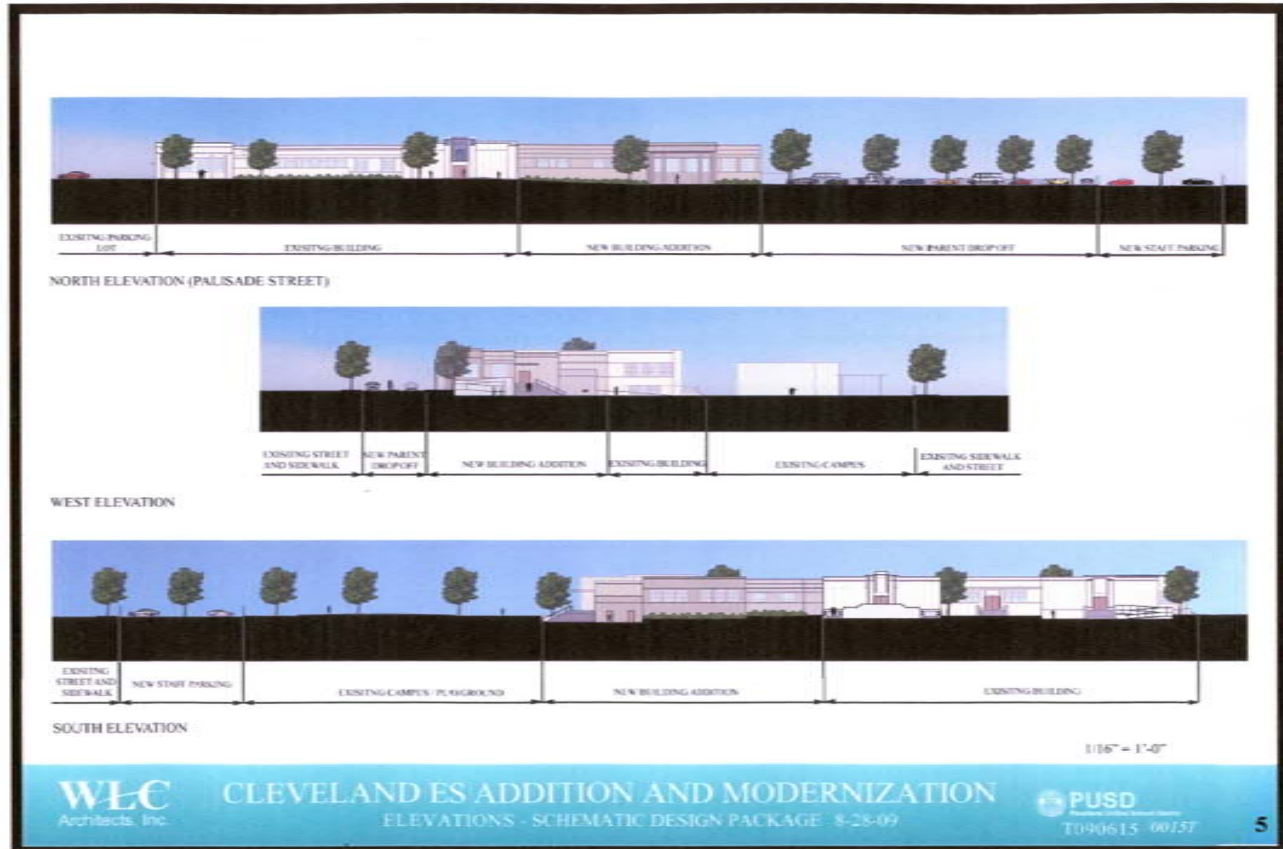
September 8, 2009

Pasadena Unified School District
Advanced Culinary Arts & Hospitality Academy / Central Kitchen

CLEVELAND ES ADDITION & MODERNIZATION SITE PLAN



CLEVELAND ES ELEVATION



CLEVELAND ES SITE PLAN

