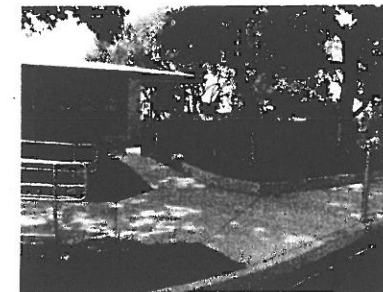
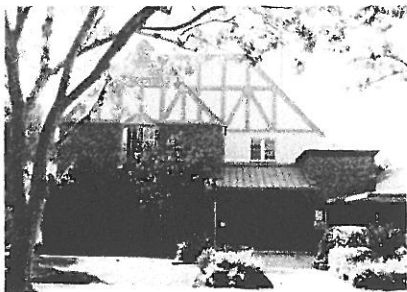


Pasadena Unified School District Facilities Master Plan Quarterly Update September 17, 2009



Facilities Projects/Costs

2009-2019

DESCRIPTION OF FACILITY NEEDS	PROJECT SCHEDULE	COST (\$ in millions)			A V A I L	COMMENTS
		Master Plan 10/08	\$ Encum To Date	Sep 2009 Estimate		

COMPLETED PROJECTS:

Asset Sales Fund – Various Pre-Bond Projects	7-01-08 to 8-31-09		2.69		(2.69)	
Developer Fees - Various Pre-Bond Projects	7-01-08 to 8-31-09		0.00			
Deferred Maintenance – Various Projects	7-01-08 to 8-31-09		0.05		(0.05)	
Food Service Fund	7-01-08 to 8-31-09		0.00			
Measure Y – Various Projects	7-01-08 to 8-31-09		0.00			
Williams Settlement Projects - \$1.2 million completed	7-01-08 to 8-31-09		0.00			
Measure TT	7-01-08 to 8-31-09		0.01		(0.01)	

PROJECTS IN PROGRESS:

Jefferson	7-01-08 to 8-31-09	12.5	0.00	12.5	12.50	
Madison	7-01-08 to 8-31-09	18.5	0.01	18.5	18.49	
Sierra Madre Lower	7-01-08 to 8-31-09	6.0	0.00	6.0	6.00	

Facilities Projects/Costs

2009-2019

DESCRIPTION OF FACILITY NEEDS	PROJECT SCHEDULE	COST (\$ in millions)			A V A I L	COMMENTS
		Master Plan 10/08	\$ Encum To Date	Sep 2009 Estimate		

PROJECTS IN PROGRESS

Washington Accelerated	7-01-08 to 8-31-09	17.4	0.00	17.4	17.40	
Willard	7-01-08 to 8-31-09	5.7	1.17	5.7	4.53	
Altadena	7-01-08 to 8-31-09	10.9	0.06	10.9	10.84	
Burbank	7-01-08 to 8-31-09	5.3	0.06	5.3	5.24	
Cleveland	7-01-08 to 8-31-09	4.4	0.20	4.4	4.20	
Don Benito	7-01-08 to 8-31-09	5.9	0.00	5.9	5.90	
Field	7-01-08 to 8-31-09	3.8	0.00	3.8	3.80	
Franklin	7-01-08 to 8-31-09	2.9	0.01	2.9	2.89	
Hamilton	7-01-08 to 8-31-09	5.2	0.01	5.2	5.19	
Jackson	7-01-08 to 8-31-09	5.1	0.04	5.1	5.06	

Facilities Projects/Costs

2009-2019

DESCRIPTION OF FACILITY NEEDS	PROJECT SCHEDULE	COST (\$ in millions)			A V A I L	COMMENTS
		Master Plan 10/08	\$ Encum To Date	Sep 2009 Estimate		

PROJECTS IN PROGRESS

Loma Alta	7-01-08 to 8-31-09	3.6	0.41	3.6	3.19	
Longfellow	7-01-08 to 8-31-09	5.1	0.00	5.1	5.10	
Roosevelt	7-01-08 to 8-31-09	8.5	0.01	8.5	8.49	
San Rafael	7-01-08 to 8-31-09	7.8	0.32	7.8	7.48	
McKinley	7-01-08 to 8-31-09	39.7	0.02	39.7	39.68	
Norma Coombs	7-01-08 to 8-31-09	5.1	0.05	5.1	5.05	
Webster	7-01-08 to 8-31-09	3.9	0.00	3.9	3.90	
Eliot	7-01-08 to 8-31-09	7.9	0.01	7.9	7.89	
Sierra Madre Upper	7-01-08 to 8-31-09	38.7	0.02	38.7	38.68	

Facilities Projects/Costs

2009-2019

DESCRIPTION OF FACILITY NEEDS	PROJECT SCHEDULE	COST (\$ in millions)			A V A I L	COMMENTS
		Master Plan 10/08	\$ Encum To Date	Sep 2009 Estimate		
PROJECTS IN PROGRESS						
Washington Middle	7-01-08 to 8-31-09	24.5	0.02	24.5	24.48	
Wilson	7-01-08 to 8-31-09	7.4	0.58	7.4	6.82	
Blair	7-01-08 to 8-31-09	51.7	1.21	51.7	50.49	
Marshall	7-01-08 to 8-31-09	22.2	0.01	22.2	22.19	
Muir	7-01-08 to 8-31-09	24.0	1.35	24.0	22.65	
Pasadena	7-01-08 to 8-31-09	35.6	1.69	35.6	33.91	
Developer Fees - Various Pre-Bond Projects	7-01-08 to 8-31-09	0.00	0.00	0.00	0.00	

Facilities Projects/Costs

2009-2019

DESCRIPTION OF FACILITY NEEDS	PROJECT SCHEDULE	COST (\$ in millions)			A V A I L	COMMENTS
		Master Plan 10/08	\$ Encum To Date	Sep 2009 Estimate		
PROJECTS IN PROGRESS						
Culinary/Central Kitchen	7-01-08 to 8-31-09	13.0	0.06	13.0	12.94	
Williams Settlement Projects	7-01-08 to 8-31-09	13.0	0.81	13.0	12.19	
CTE Projects	7-01-08 to 8-31-09	30.0	0.00	30.0	30.00	
Energy and Water Savings Projects	7-01-08 to 8-31-09	5.0	0.57	5.0	4.43	
Technology Projects	7-01-08 to 8-31-09	5.0	0.00	5.0	5.00	
Deferred Maintenance	7-01-08 to 8-31-09	15.0	2.30	15.0	12.70	
Portables remove and replace, if applicable	7-01-08 to 8-31-09	1.0	0.06	1.0	0.94	
Painting and Exterior Appearance Upgrades	7-01-08 to 8-31-09	2.0	0.16	2.0	1.84	
Seismic Upgrades	7-01-08 to 8-31-09	10.0	0.00	10.0	10.00	

Facilities Projects/Costs

2009-2019

DESCRIPTION OF FACILITY NEEDS	PROJECT SCHEDULE	COST (\$ in millions)			A V A I L	COMMENTS
		Master Plan 10/08	\$ Encum To Date	Sep 2009 Estimate		
PROJECTS IN PROGRESS						
Bogen Clock Speaker System	7-01-08 to 8-31-09	1.6	1.45	1.6	0.15	
Other Project Related Expense	7-01-08 to 8-31-09	7.7	1.38	7.7	6.32	
Bogen Clock Speaker System Reallocation*	7-01-08 to 8-31-09	(1.6)		(1.60)	(1.60)	
Culinary/Central Kitchen Reallocation*	7-01-08 to 8-31-09	(13.0)		(13.0)	(13.00)	
Williams Settlement Projects*	7-01-08 to 8-31-09	(13.0)	1.22	(13.0)	(14.22)	
QZAB/E-RATE District Tech. Infrastructure Project	7-01-08 to 8-31-09	7.6	6.99	7.6	0.61	
Pre-FMP Projects – Asset Sales	7-01-08 to 8-31-09	3.8	1.27	3.8	2.53	
Pre-FMP – Measure Y	7-01-08 to 8-31-09	3.0	1.66	3.0	1.34	
Total Facilities Master Plan Projects		465.0	18.02	465.0	446.98	
Pre- Master Plan Projects		14.4	9.92	14.4	4.48	
Total Facility Projects		479.4	27.94	479.4	451.46	

*Reallocated from various sites

Funding Plan

2009-2019

SOURCE OF FUNDS	Funds (\$ in millions)		COMMENTS
	Master Plan 10/06 Rev	Sep 2009 Estimate	
1. General Obligation Bond (Measure TT)	\$350.00	350.00	Does not includes interest on investment
2. Developer Fees	20.00	20.00	Assumes Level I through plan Horizon
3. Williams Settlement Funding	13.00	13.00	Assumes State Bond in Future
4. Deferred Maintenance (State/District Funding)	15.00	15.00	District Contribution @ 100% and State match @ 50%
5. State Modernization and other Grants	25.00	25.00	All types of State/Federal funding except CTE
6. State/Joint Use Partnership Grants	6.00	6.00	2 Gyms at \$3 Million
7. Joint Use/Partnership Grants – Athletic Fields – 50%	4.00	4.00	4 artificial surface fields at High schools
8. State Funding - Seismic	5.00	5.00	Will vary based on projects undertaken
9. Career Technical Match	15.00	15.00	15 Academies @ \$1 Million; State and Local
10. State Funding – modernization / growth	12.00	12.00	Balance @ 10/01/08
Total Funds	\$465.00*	\$465.00*	
Pre- Master Plan Funds	14.4	14.4	
Total Facility Funds	479.4	479.4	

*No fund balances include interest income except as needed to cover estimate shortfalls

Bottom Line

- **Master Plan expected cost \$465.00 million**
- **Master Plan expected revenue \$465.00 million**
- **No Projected Gap**
- **Approximately \$28 Million Committed since 7/01/08**
- **Over 90% of projects on time and within budget**
- **Overall Summer projects are \$3.2 million below Facilities Master plan allocation**

Emerging Issues/Milestones

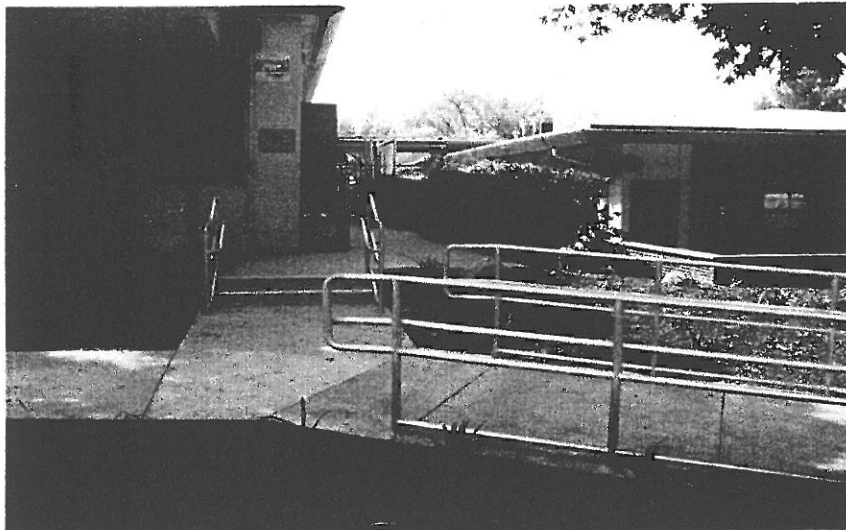
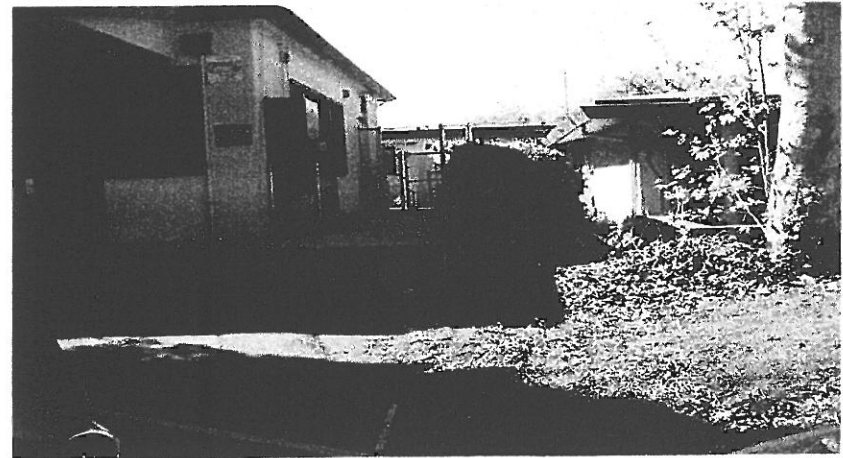
- **Bonds sold - \$125 Million with a tax rate for first year of \$38.83/\$100,000 Assessed Valuation. Tax Rate Statement estimate was \$40.33/ \$100,000 Assessed Valuation**
- **DSA still experiencing delays in approval of documents, which slowed down the approval of shade structures.**
- **Major Projects in design:**
 - **Cleveland Modernization./Upgrades - \$3.6 Million**
 - **Culinary Academy/Central Kitchen - \$13 Million**
 - **Blair Middle School - \$14 Million**
 - **Sierra Madre Middle School - \$28 Million**

PUSD

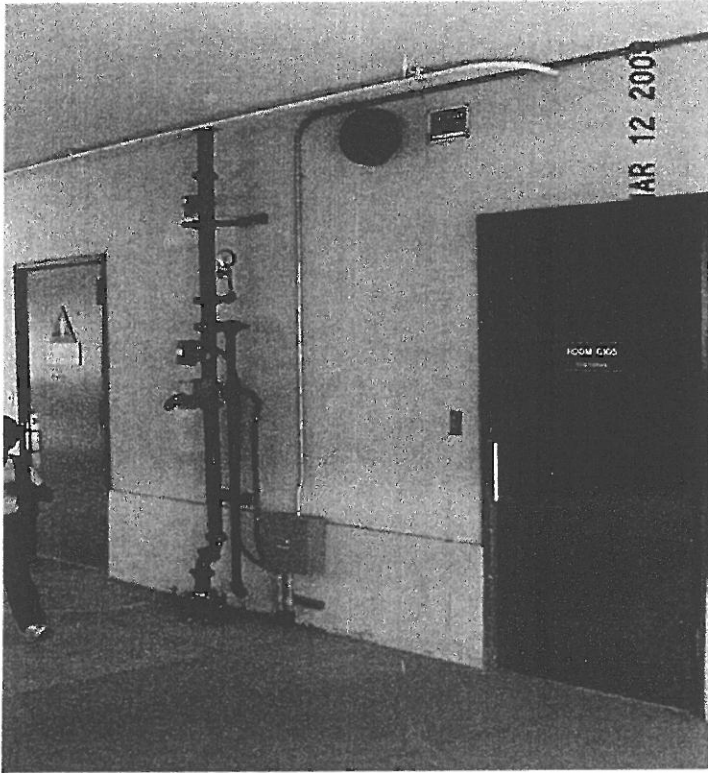
SUMMER UPDATES 2009

LOMA ALTA PRESCHOOL PROJECT – Summer 2009

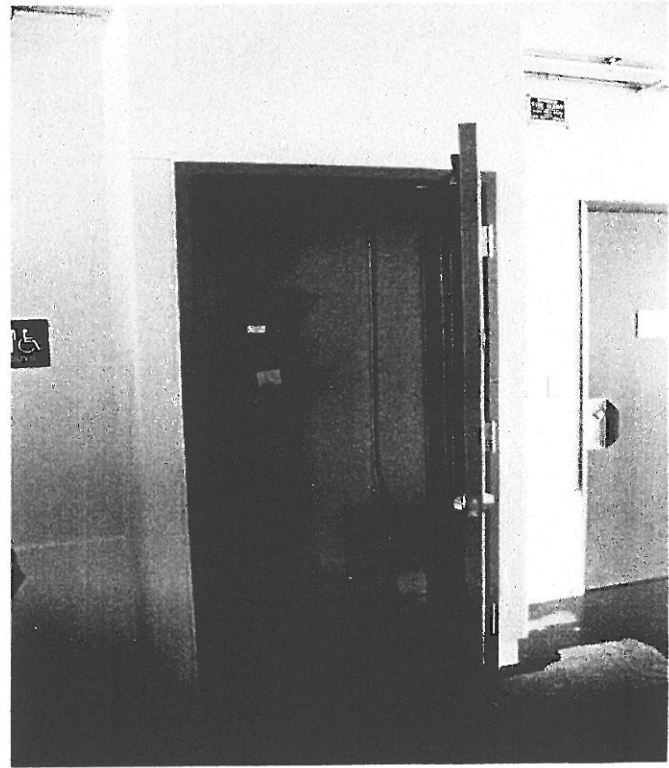
BEFORE.....



.....AFTER



..... BEFORE

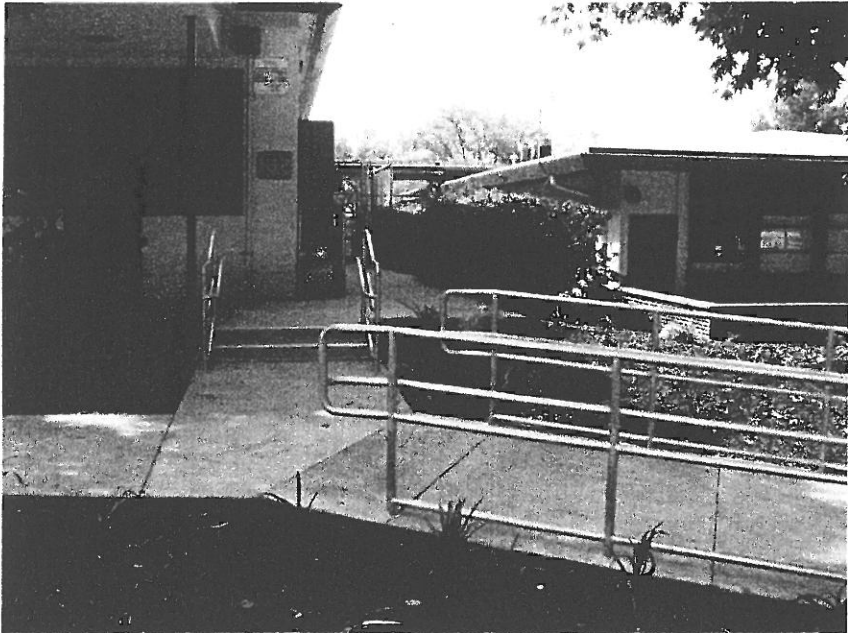


AFTER

BEFORE.....



.....AFTER



John Muir High School Track & Field Upgrade



BEFORE

AFTER



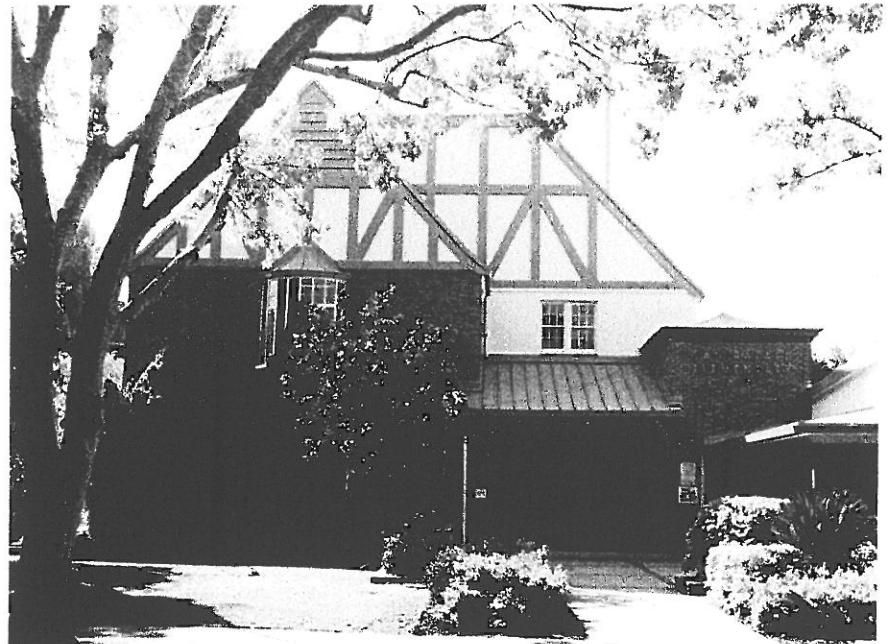
SAN RAFAEL – Summer 2009

Upgrades

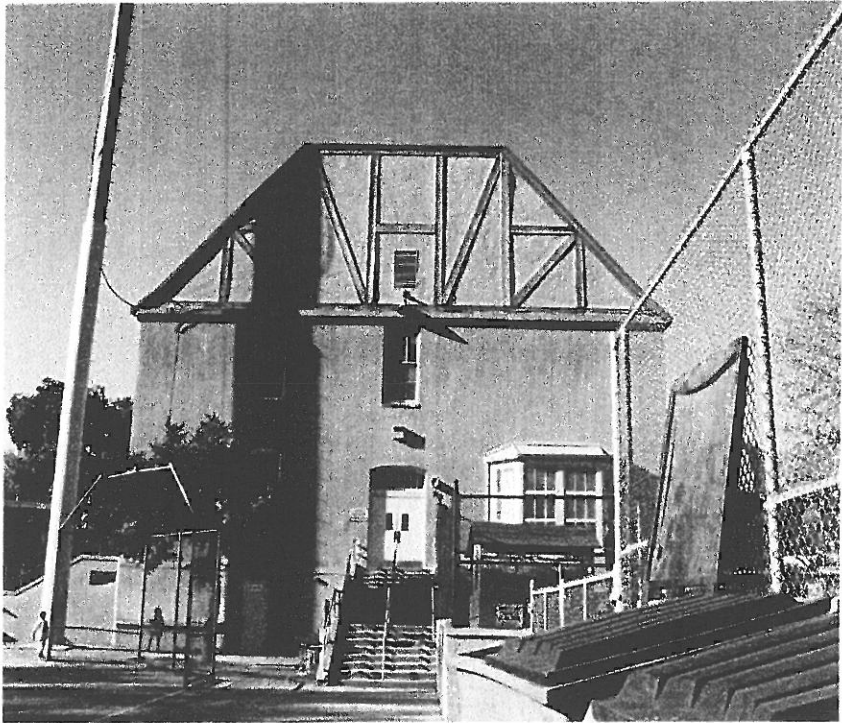
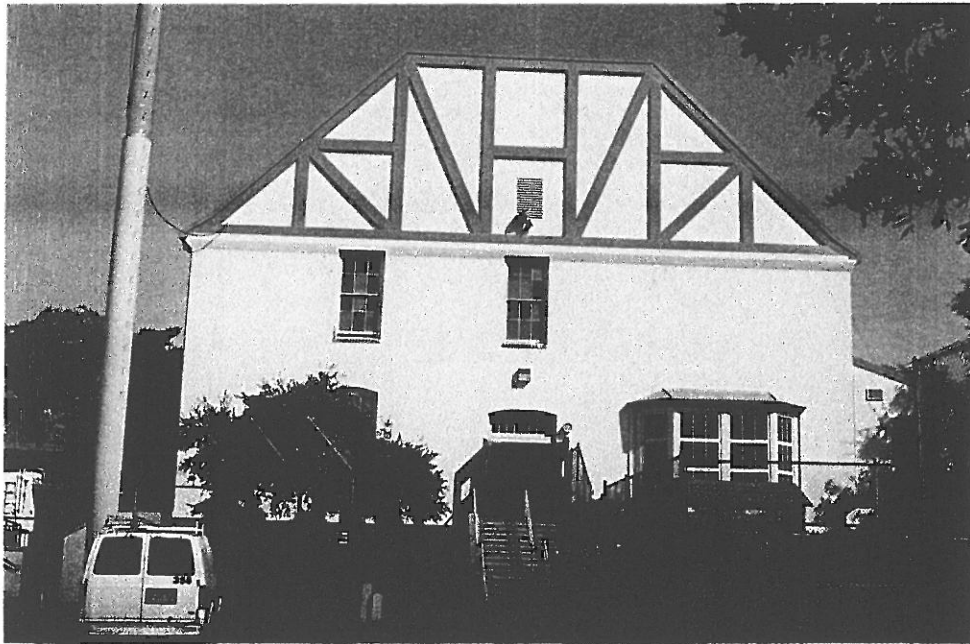


BEFORE

AFTER



BEFORE.....

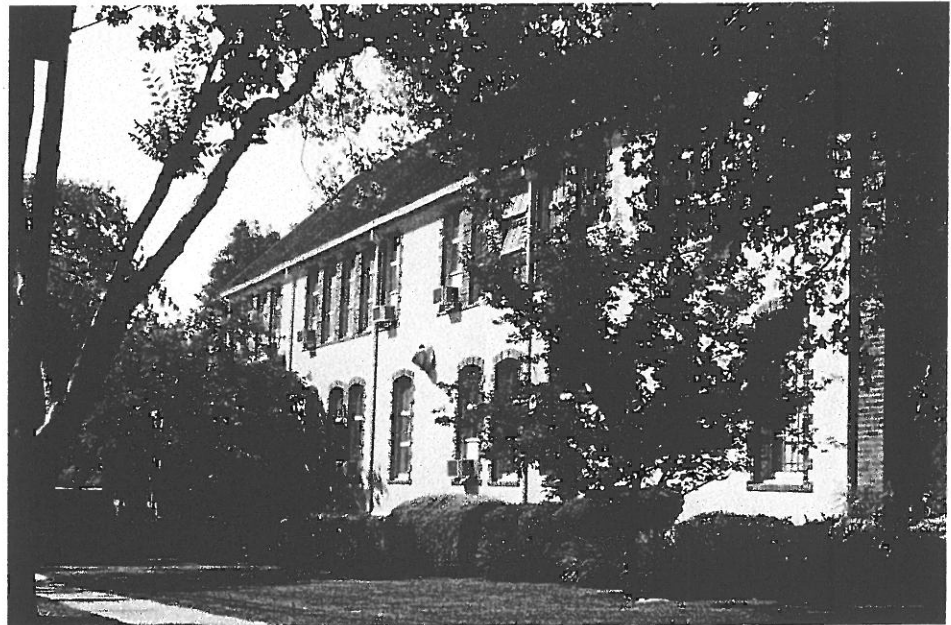


.....AFTER

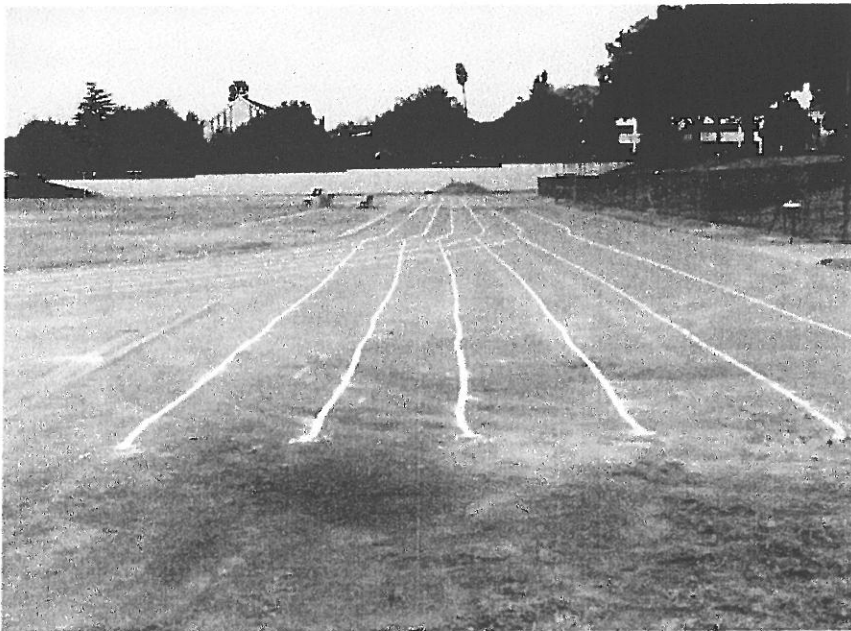


..... BEFORE

AFTER



Pasadena High School Track & Field Upgrade



BEFORE

AFTER

